



morton.

Sydney 1002/148 Elizabeth Street



Enjoy an unprecedented central location in the heart of Sydney's CBD, with this unique 10th floor studio apartment at the coveted Hyde Park Towers. Bordering the beautiful parklands of Hyde Park, the residence offers seamless access to all that the city has to offer.

- Large floor plan with all weather balcony
- Modern kitchen with gas stove, quality appliances
- Mirrored built-in wardrobe
- Ducted air conditioning throughout
- Spacious studio apartment set over 58sqm
- Heated indoor pool, spa, and well-equipped gymnasium

View

As advertised or by appointment

Agent

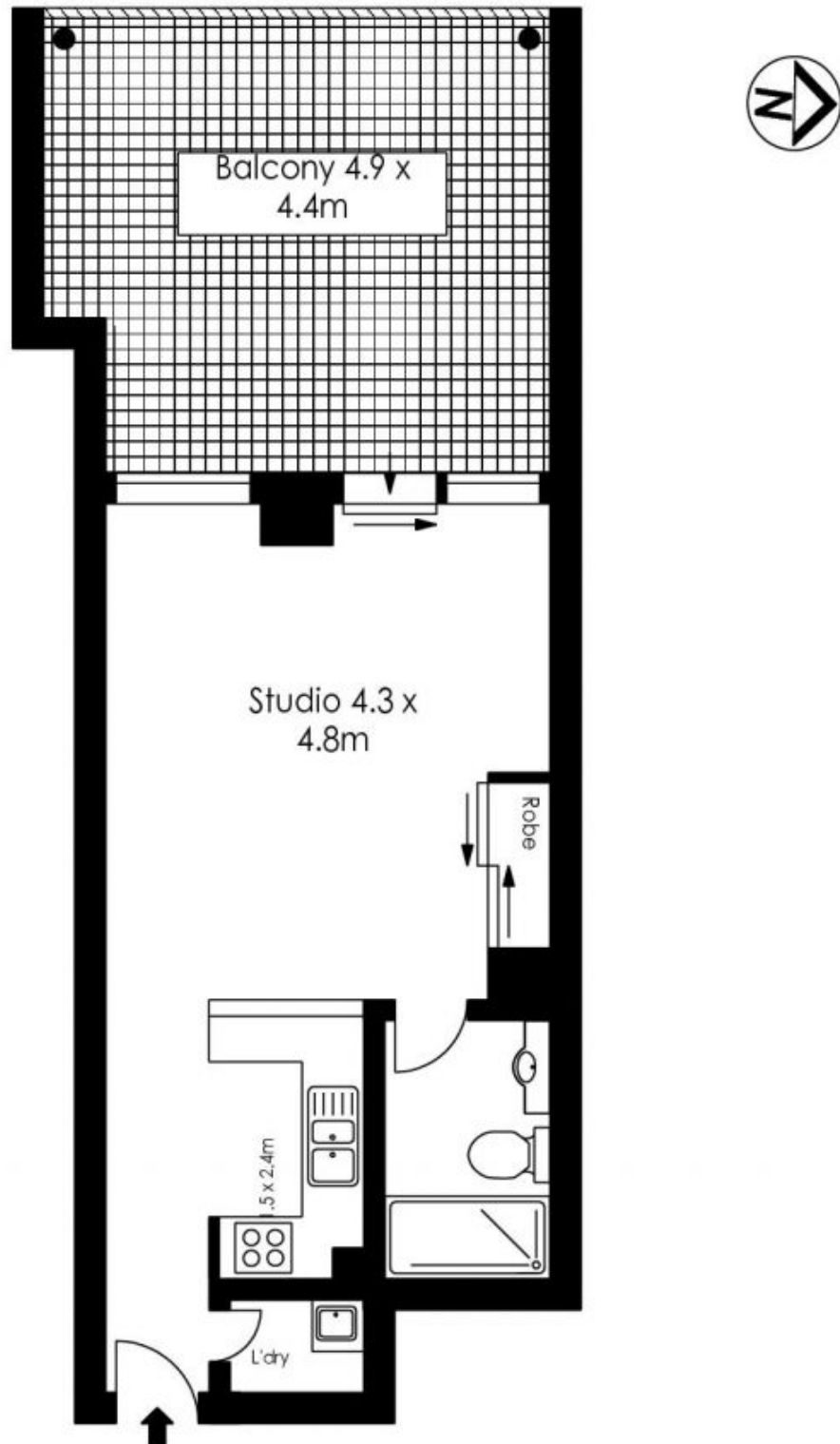
Morton RE



rentals@morton.com.au

morton.com.au

1002/148 Elizabeth Street, Sydney



The information above is provided in good faith and has been provide to us from a variety of sources. We have not verified whether the information is accurate and do not have any belief one way or other in its accuracy. We do not accept any responsibility to any person for its accuracy and do no more than pass it on. All interested parties should rely on their own inquiries in order to determine whether or not this information is in fact accurate.