



**morton.**

**Wentworth Point** 605/48 Amalfi Drive

 2  2  2

If you've been searching for a quality single-level home that offers space, style and an enviable lifestyle location, this superb property will tick every box on your wish list. Featuring a generous two-bedroom layout, it offers a smart and modern design that makes it a fresh and easycare living space with chic interiors, lots of natural light and an elevated aspect that overlooks the community gardens and swimming pool.

- An immaculate security complex with lift and intercom access
- Air-conditioned open plan layout with fresh modern decor
- North facing balcony with a pleasant aspect over the pool
- Modern kitchen with quality gas fittings and dishwasher
- Two bedrooms positioned at opposite ends of the floorplan
- The master has a walk-in robe and ensuite with full bathtub
- Security tandem car space plus lock-up storage on title


**View**

As advertised or by appointment

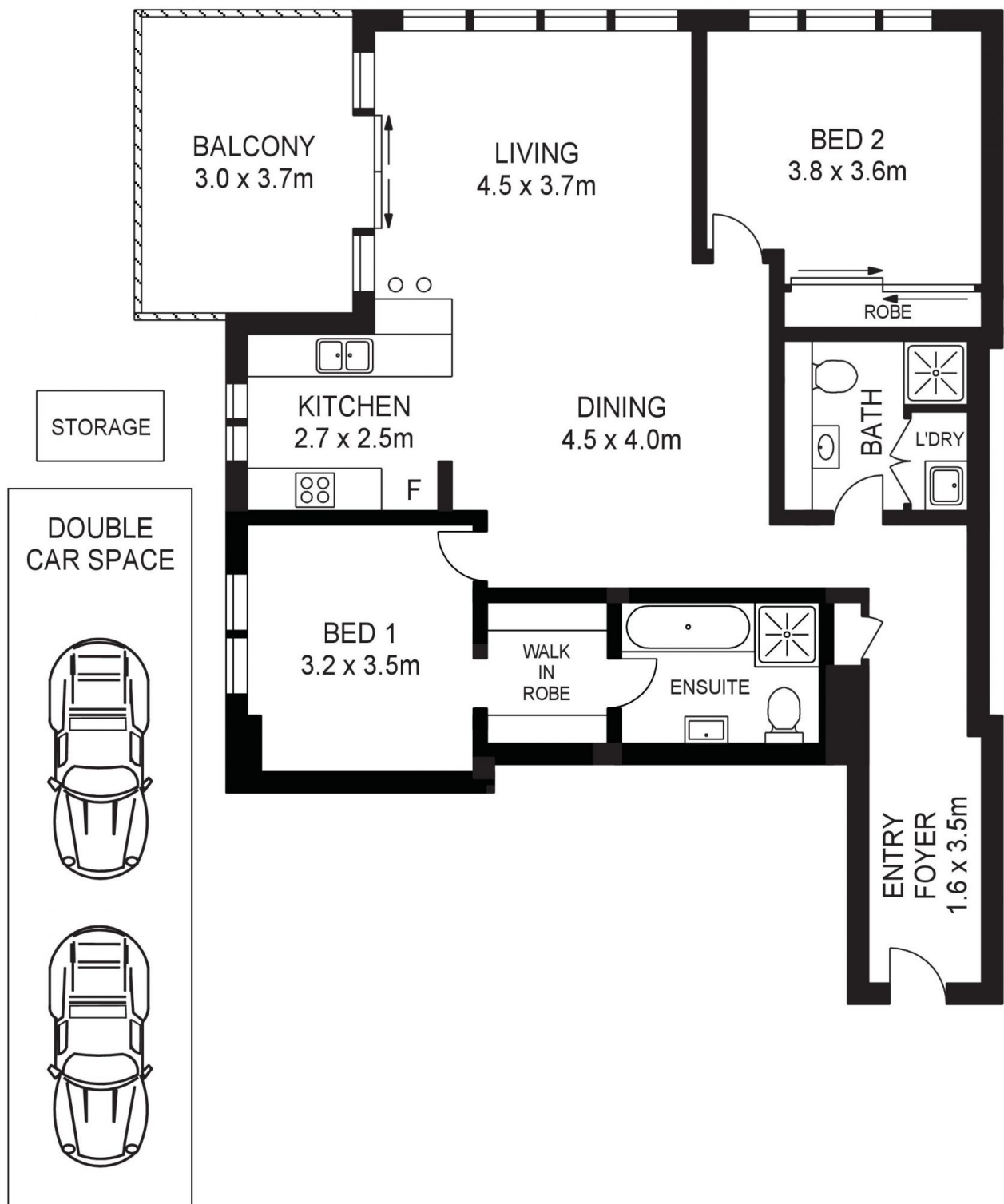
**Agent**

**Dylan Choe**

 0416 932 977

 [dylanchoe@morton.com.au](mailto:dylanchoe@morton.com.au)

[morton.com.au](http://morton.com.au)



APPROX. INT. AREA : 103m<sup>2</sup>

APPROX. EXT. AREA : 39m<sup>2</sup>

605/48 AMALFI DRIVE, WENTWORTH POINT



www.assetphotographers.com.au

Please note these measurements are approximate only. The plans are intended as a rough guide for illustrative purposes. It is not warranted or guaranteed to be correct nor is it a part of the sale or rental contract.

