

# morton.

**Waterloo** 501/18-22 Amelia Street

1 1 1

Located in the Waterloo, just 3km from the CBD, the new ORE development is eye-catching design with urban living at its best. Stylish residential building maximises natural light and space for sophisticated living.

- Generous size open plan living and dining area
- Stainless steel appliances and gas cook top
- Caesar stone bench top, charcoal glass splashbacks
- Bathroom with modern luxurious finished
- Timber floors in living rea
- Security Intercom Access
- Ducted air conditioning throughout
- Balcony great for entertaining
- Secure underground car space

## View

As advertised or by appointment

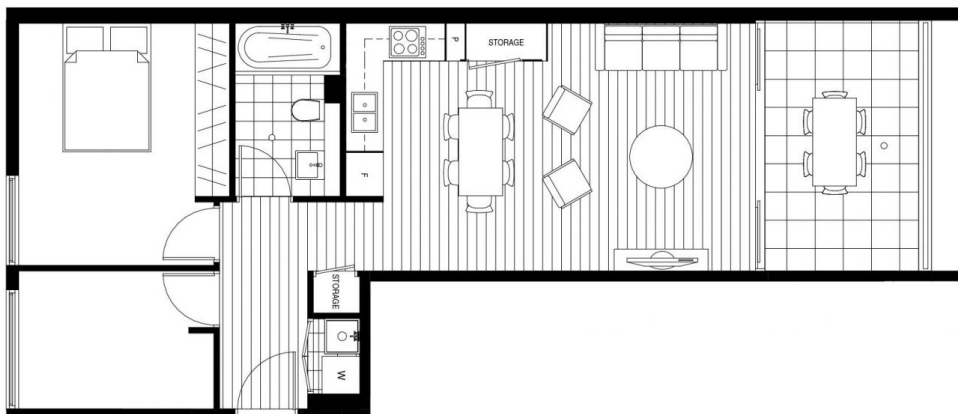
## Agent

**Sarah Fowell**

0437 492 129

sarah@morton.com.au

**morton.com.au**



Disclaimer: 1. Please note, this layout plan was produced prior to construction. 2. The information is believed to be correct, but is not guaranteed. 3. Changes may be made during construction and dimensions, areas, fittings, finishes and specification are subject to change without notice in accordance with the provisions of the contract for sale. 4. The furniture and furnishings depicted are not included with any sale and purchasers must refer to their contract for sale for the list of inclusions. 5. The position of the furniture and furnishings should not be taken to be indicative of final positions of power points, tv connection points and the like. 6. Prospective purchasers must rely on their own enquiries. 7. All graphics including tile layout and balustrades and the like are indicative only. 8. Bulkheads for services are not depicted. 9. The layout plan is at an unspecified scale.



THE **HEART** OF INNER CITY LIVING.

**APARTMENT**  
**201, 301, 401, 501, 601**  
**LEVEL 2 - 6**  
**2 bedroom**

Internal area	59sqm
Balcony area	10sqm
<b>Total area</b>	<b>69sqm</b>

9211 9993  
[oreapartments.com.au](http://oreapartments.com.au)

**CPM**  
 REALTY