



morton.

Surry Hills 1026/20 Pelican Street

 1  1  1

Set high in 'Monument', this stunning home is the ultimate in sophisticated designer living. This iconic offering presents a welcoming 72sqm with breathtaking views that stretch from the Harbour Bridge and the iconic sails of the Opera House, to Bondi Junction. This is the first of its kind to come to the market in 2 years, one of few with an oversized dual access balcony in the building.

- Embracing the warming light of a northern aspect
- Benefit from a secure parking space and storage cage
- Well proportioned open plan lounge and dining
- Sunny balcony, double bedroom with built-in robe
- Study, quality granite kitchen and European laundry
- Heated outdoor pool, landscaped gardens, gym
- Air conditioning, pet friendly, concierge

View

As advertised or by appointment

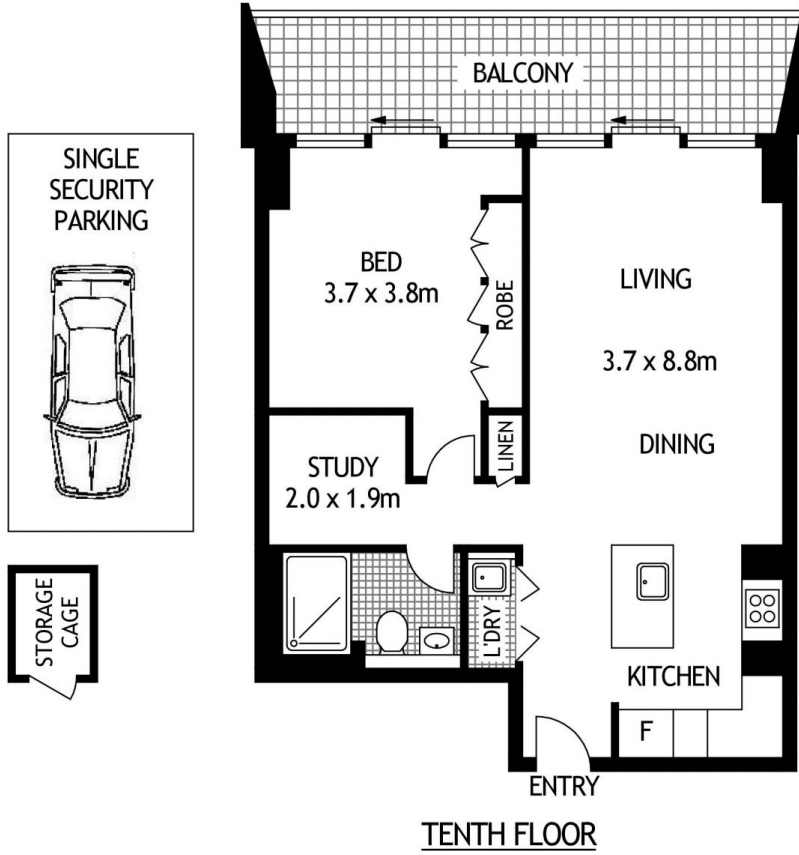
Agent

Ettiene West

 0410 593 749

 ettiene@morton.com.au

morton.com.au



1026/20 PELICAN STREET

SURRY HILLS

SCAPE Floor Planing Disclaimer: This floor plan is conceptual only. It is provided for illustrative purposes only and should not be relied upon. We make no guarantee as to the correctness of this plan. All interested parties should make and rely on their own enquiries in determining the accuracy of the information contained in this floor plan.