



# morton.

**Penrith** E532/1 Lord Sheffield Circuit

 1  1  1

Located in the hub of North Penrith, Harts Landing offers contemporary urban living in a master planned vibrant community called Thornton Estate. Only metres from Penrith train station, Westfield shopping centre and local parks.

#### Features

- Covered balcony, Northwest facing with Blue Mountains views
- Kingsized carpeted bedrooms with mirrored built-in robes-
- Tiled open living and dining area, efficient LED lighting throughout
- Reverse cycle air conditioning, block-out roller blinds throughout
- Stylish kitchen with stone bench-tops, soft close drawers & cupboards
- Gas stove top with stainless steel dishwasher, microwave and oven
- NBN ready, Data/TV/PayTV points in the living & bedroom
- Large quality bathroom with mirrored vanity cabinet
- Internal laundry with dryer

#### View

As advertised or by appointment

#### Agent

**Anthony Fleming**

 0437 929 484

 [anthonyf@morton.com.au](mailto:anthonyf@morton.com.au)

[morton.com.au](http://morton.com.au)



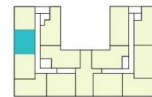
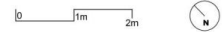
## BUILDING A

### LEVEL 2

#### APARTMENT A232 LOT 17

1 BEDROOM + STUDY

INTERNAL AREA	51m <sup>2</sup>
EXTERNAL AREA	7m <sup>2</sup>
<b>TOTAL</b>	<b>58m<sup>2</sup></b>



Disclaimer: This floor plan has been prepared for marketing purposes only. All descriptions, dimensions, depictions and other details in this floor plan may not be to scale and may vary from the property as built. Your attention is drawn to the special conditions of the contract for sale of land. No third party has any authority to make or give any representation or warranty in relation to the property unless the representation or warranty is confirmed by the vendor and included in the contract for sale of land. Revised floor plans - 14.08.18

**CALL 1300 548 588**  
**HARTSLANDING.COM.AU**  
 LORD SHEFFIELD CIRCUIT, PENRITH  
**LINK DISPLAY SUITE**  
 22 GADIGAL AVENUE, ZETLAND

PROUDLY DEVELOPED BY **PAYCE** SALES BY **LINK**