



# morton.

Wentworth Point H9136/19 Amalfi Drive

 2  2  1

Located in one of the finest and newest developments in Wentworth Point, One The Waterfront, this two bedroom apartment offers a unique luxury lifestyle with high end facilities to entertain all year round while maintaining the ambiance of that idyllic lifestyle you've always wanted. Within easy access to transport links to Rhodes, Parramatta and Circular Quay, you'll be a stone's throw from local eateries, shops, and amenities with The Piazza, Marina Square, and The Promenade just moments away.

#### Features:

- North-west facing open balcony
- Designer kitchen with Bosch built-in appliances
- Spacious bedrooms with built-in wardrobes
- Full bathroom and separate en-suite off master
- Internal laundry with dryer
- Split system air-conditioning
- Secure basement parking plus storage cage
- Audio-video intercom life access

[morton.com.au](http://morton.com.au)

#### View

As advertised or by appointment

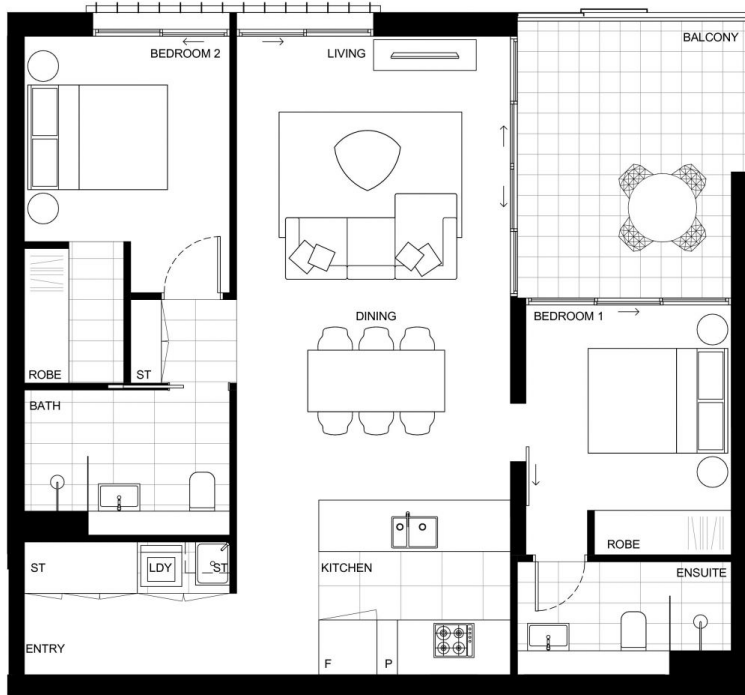
#### Agent

**Sarah Fowell**

 0437 492 129

 [rentals@morton.com.au](mailto:rentals@morton.com.au)

BUILDING  
ONE H



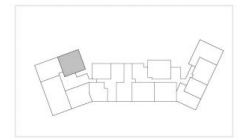
Disclaimer: This plan is a guide only and does not constitute an offer or contract. Please note changes may be made during the development and areas, fittings, fixtures and specifications are subject to change without notice in accordance with the terms of the contract of sale. All parties must rely on their own investigation to validate this information as it is not guaranteed. No liability will be accepted for any inaccuracy misstatement. **[Date Issued 04/04/16 F]**

**ONE**  
THE WATERFRONT

APARTMENT | LOT  
**9136 | 41**

2 Bed + 2 Bath

INTERNAL 82m<sup>2</sup>  
EXTERNAL 12m<sup>2</sup>  
**TOTAL 94m<sup>2</sup>**



BUILDING ONE H LEVEL 9

1300 865 465 onethewaterfront.com.au

DEVELOPED BY **PIETYTHP** SALES BY **LINK**