



morton.

Pagewood 69 Holloway Street

3 2 2

Stunning private home with high end finishes. Popular 3 bed and study plan in the recently completed "Silkwood" development. Prime position facing quiet Holloway Street with a perfect North East aspect. Total privacy and expansive district views from the top floor parents' retreat balcony. Spacious and contemporary design completed to the highest standard of finish.

Features Include:

- 3 bedroom plus study
- Expansive ground floor living
- Indoor/outdoor living - connected to landscaped courtyard
- Separate street frontage access and direct access from parking to courtyard
- 2 car spaces plus secure storage cage
- Large windows for beautiful natural light with contemporary living areas and bathrooms with timber and stone finishes
- Miele appliances including fridge/freezer, microwave and dishwasher
- Close to public transport, Eastgardens Shopping centers and

View

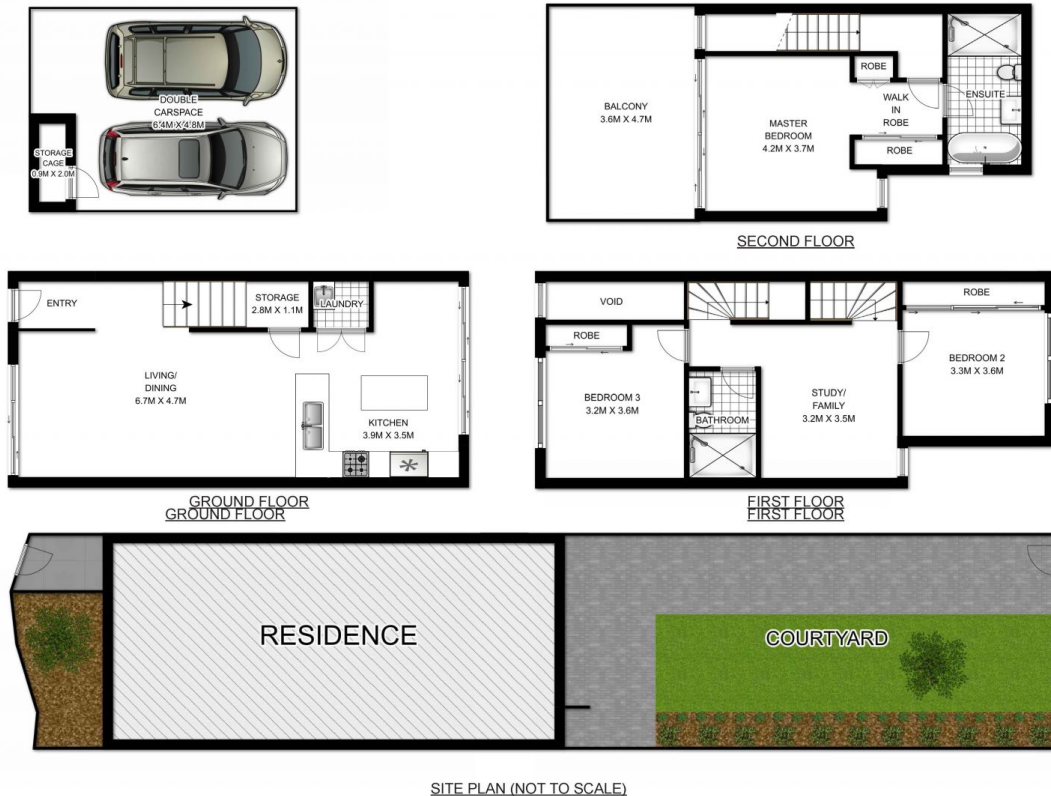
As advertised or by appointment

Agent

Morton

info@morton.com.au

morton.com.au



SITE PLAN (NOT TO SCALE)



DISCLAIMER: 3D Property View accepts no liability for the accuracy of details contained within our floor plans. All plans are drawn and also checked to the best of our ability, however information contained in our floor plans such as area calculations are approximate, and have not been surveyed or drawn to scale.

69 Holloway Street, Pagewood