



# morton.

**Wentworth Point** 415/4 Baywater Drive

 1  1  1

Located in Corsica at The Waterfront estate, here is your opportunity to move into this well maintained spacious one bedroom apartment. Situated in the heart of Wentworth Point, you'll be a short stroll to public transport links on Hill Road, local restaurants and stores, and leisure amenities. Wentworth Point's retail quarters Marina Square and Pierside are located just moments away, with the ferry wharf with services to Parramatta and Sydney CBD accessible by the complimentary Baylink shuttles bus.

Features:

- Plentiful natural sun light from its east-facing balcony
- Open living and dining room flowing onto covered full span entertainer's balcony
- Split system air conditioning
- Galley kitchen fully equipped with gas cooking and stainless steel appliances
- Spacious bedroom with built-in wardrobe and direct balcony access

[morton.com.au](http://morton.com.au)

**View**

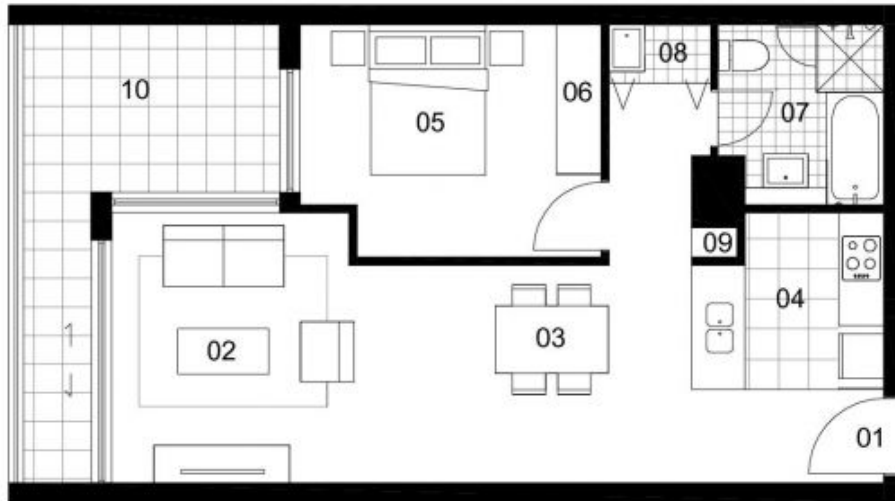
As advertised or by appointment

**Agent**

**Sarah Fowell**

 0437 492 129

 [rentals@morton.com.au](mailto:rentals@morton.com.au)



LOCATION PLAN

**UNIT 415**  
 1 BEDROOM  
 INTERNAL AREA 56 sqm  
 TERRACE AREA 11 sqm  
 TOTAL AREA 67 sqm

- ENTRY 01
- LIVING 02
- DINING 03
- KITCHEN 04
- BEDROOM 05
- WARDROBE 06
- BATHROOM 07
- LAUNDRY 08
- STORE 09
- BALCONY/COURTYARD 10

Disclaimer: The particulars are set out as a general outline for the guidance of intending purchasers and do not constitute an offer or contract. All descriptions, dimensions, references to conditions and necessary permissions for use and other details are given in good faith and are believed to be correct, but any intending purchasers should not rely on them as statements or representations of fact, but must satisfy themselves by inspection or otherwise to the correctness of each item, and where necessary seek independent advice. No third party supplier or their agents has any authority to make or give any representations or warranty in relation to this property. \* External areas may be larger for courtyard apartments. Refer to the detailed area schedule.

**CORSICA**