



morton.

Bondi Junction 1105/253 Oxford Street

 1  1  1

Located in the hub of Bondi Junction, Capitol offers resort-style apartment living with a private rooftop entertainment area and easy access to a lively Westfield, bus/train interchange and Bondi Beach.

- Reverse cycle air conditioning
- Stainless steel appliances
- Soft close kitchen draws and cupboards
- Stone bench tops, mirror splash back
- LED under cupboard lighting
- Timber floors, efficient LED down lights
- Data/TV points in living and main bedroom
- Recessed mirrored cabinets in bathroom
- Security building, video intercom
- Common rooftop with BBQ area

View

As advertised or by appointment

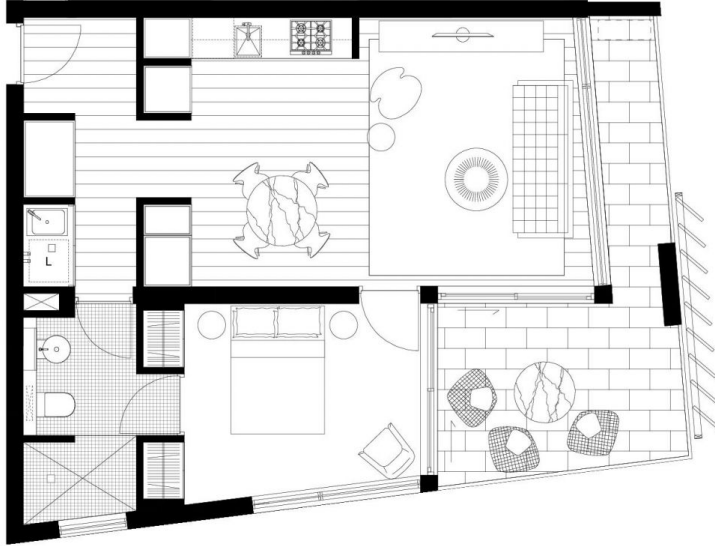
Agent

Sarah Fowell


 0437 492 129

 sarah@morton.com.au


morton.com.au



Disclaimer: This plan is guide only and does constitute an offer or contract. Please note charges may be made during the development and areas, fittings, fixtures and specifications are subject to change without notice in accordance with the terms of the contract of sale. All parties must rely on their own investigation to validate this information as it is not guaranteed. No liability will be accepted for any inaccuracy/misstatement.



CAPITOL
BONDI JUNCTION




LEVEL 5-14

**APT 5.04, 6.05, 7.05, 8.05, 9.05, 10.05, 11.05
12.05, 13.05, 14.05**

1 BED

Internal area	50sqm
External area	13sqm
Total	63sqm



www.capitolbondi.com.au
1800 66 33 95

