



morton.

Riverwood 906/7 Washington Avenue

 3  2  2

Located in the new urban hub of Washington Park, Como offers lifestyle apartment living within the master-planned community. With easy access to the M5 and only 20kms to the CBD.

APARTMENT FEATURES

- Spacious living and dining area
- Large balconies, leafy aspect
- Reverse cycle air conditioning
- Stainless steel kitchen appliances
- Stone bench tops, mirror splash backs
- LED under cupboard lighting
- Wool carpets, efficient LED down lights
- Data/TV points in living and main bedroom
- Recessed mirrored cabinets in bathroom
- Built in robe in each bedroom
- Security building, security intercom
- Double car spaces, lift access

View

As advertised or by appointment

Agent

Lisa Xi

 0401 311 667

 lisa@morton.com.au

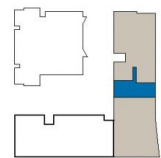
morton.com.au



**APARTMENT 906
LOT 134
3BED + STUDY**

Internal	109sqm
External	19sqm
Total	128sqm

COMO



1300 111 088
www.washingtonpark.com.au



Disclaimer: This floor plan has been prepared for marketing purposes only. All descriptions, dimensions, depictions and other details in this floor plan may not be to scale and may vary from the property as built. Your attention is drawn to the special conditions of the contract for sale of land. No third party has any authority to make or give any representation or warranty in relation to the property unless the representation or warranty is confirmed by Payce Communities No.1 Pty Limited and included in the contract for sale of land. [Rev A 13.05.13]

