



morton.

Neutral Bay 9/28 Bent Street

🛏 2 🚿 1 🚗 1

Located in a quiet elevated street position, this top floor renovated two bedroom apartment has sensational 180 degree views of North Sydney, the city skyline and the Harbour Bridge. Located within a short walk to city transport, parks, shopping centres and an array of cafes and restaurants, this apartment is one of a kind.

- Enormous 90 sqm exterior terrace with exceptional views
- Open plan living area with high ceilings and additional balcony
- Air conditioning to living area
- Both bedrooms include built-in wardrobes and brand new blinds
- Kitchen with Miele appliances and dual dishdrawers
- Modern bathroom with separate shower recess and bathtub
- Lock-up garage
- Internal laundry with dryer

View

As advertised or by appointment

Agent

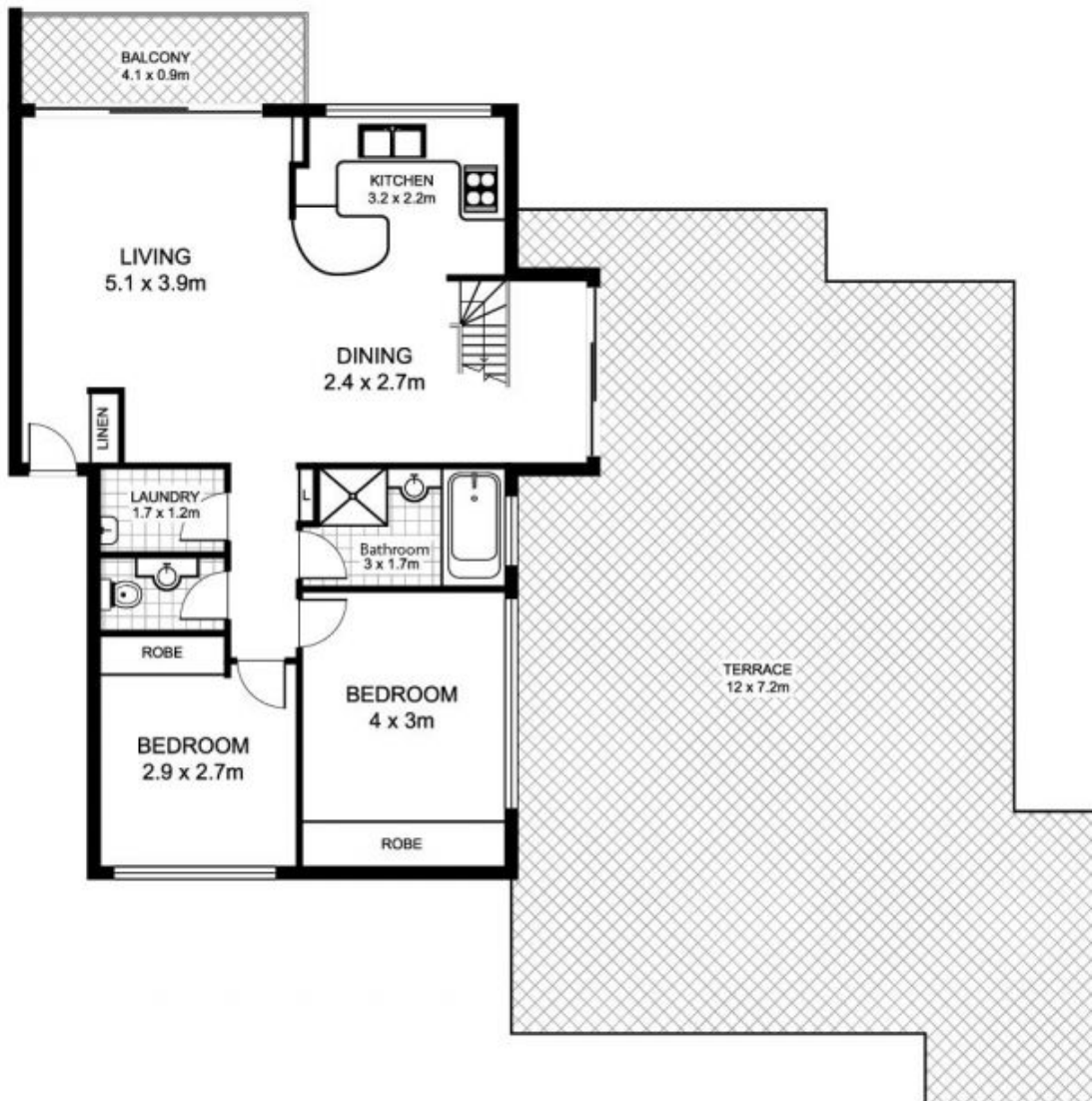
Sarah Fowell

📞 0437 492 129

✉ sarah@morton.com.au

morton.com.au

9/28 Bent Street, NEUTRAL BAY



This floor plan is intended as a guide only. Layout dimensions are approximate only. No representations or warranties of any nature whatsoever are given or intended. Any person using this information should rely on their own enquiries



Plans by
surroundpix
com.au
1300 30 32 40