



# morton.

**Penrith** 319/1-39 Lord Sheffield Circuit

 2  2  1

Located in the hub of North Penrith, Harts Landing apartments are stylish, unfurnished and offer contemporary urban living in a master planned vibrant community called Thornton Estate. Only metres from Penrith train station, Westfield shopping centre and local parks.

Features Include:

- Stylish kitchen, stone bench tops, soft close drawers
- Timber looking tiled open living and dining area
- Four burner stove top with stainless steel appliances
- Efficient LED throughout, large floor to ceiling windows
- Wool-blend carpeted bedroom mirrored built-in robes
- NBN ready, Data/TV/PayTV points in living & bedroom
- Block-out roller blinds throughout, reverse cycle A/C
- Quality bathroom/ensuite, internal laundry
- Secure basement parking with a lockup storage
- Video intercom with security and lift access
- Landscaped common BBQ area, onsite building manager
- Pet-friendly building subject to owner approval

**View**

As advertised or by appointment

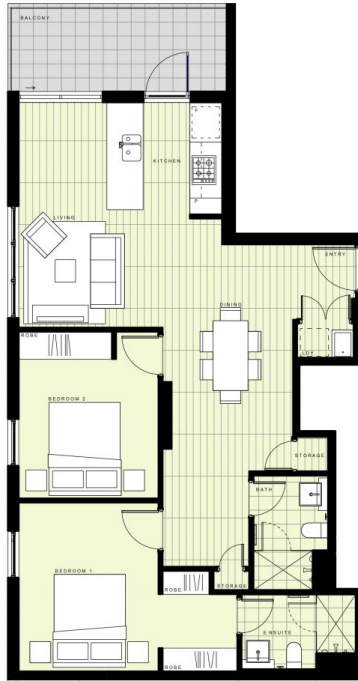
**Agent**

**Amy Torbarina**

 0438 977 172

 amy@morton.com.au

[morton.com.au](http://morton.com.au)



## BUILDING B

### LEVEL 3

#### APARTMENT B319 LOT 126

2 BEDROOM

INTERNAL AREA	74m <sup>2</sup>
EXTERNAL AREA	8m <sup>2</sup>
<b>TOTAL</b>	<b>82m<sup>2</sup></b>



Disclaimer: This floor plan has been prepared for marketing purposes only. All descriptions, dimensions, depictions and other details in this floor plan may not be to scale and may vary from the property as built. Your attention is drawn to the special conditions of the contract for sale of land. No third party has any authority to make or give any representation or warranty in relation to the property unless the representation or warranty is confirmed by the vendor and included in the contract for sale of land. Revised floor plans - 14.08.18

**CALL 1300 548 588**  
**HARTSLANDING.COM.AU**  
 LORD SHEFFIELD CIRCUIT, PENRITH  
**LINK DISPLAY SUITE**  
 22 GADIGAL AVENUE, ZETLAND

PROUDLY DEVELOPED BY **PAYCE** SALES BY **LINK**