



morton.

Pyrmont 9D/2 Bowman Street

 3  2  2

Opening to the light of a north-eastern aspect and embracing breath-taking harbour views, this refined unfurnished designer apartment defines elegant luxury living. In what is arguably Jacksons Landing's most exclusive boutique building 'Evolve', the flawless interiors are defined by an unsurpassed attention to detail.

- A community unmatched in quality, aspect or design
- Remarkably private and quiet, cooling cross breezes
- Intuitive layout, formal and casual entertaining areas
- Chic CaesarStone induction kitchen with Vintec fridges
- Study alcove, bespoke cabinetry, C Bus and ducted air
- Essentially no common walls, vast entertaining terrace
- Double bedrooms, built-in wardrobes and storage cage
- Resort facilities include a pool, gymnasium and sauna

View

As advertised or by appointment

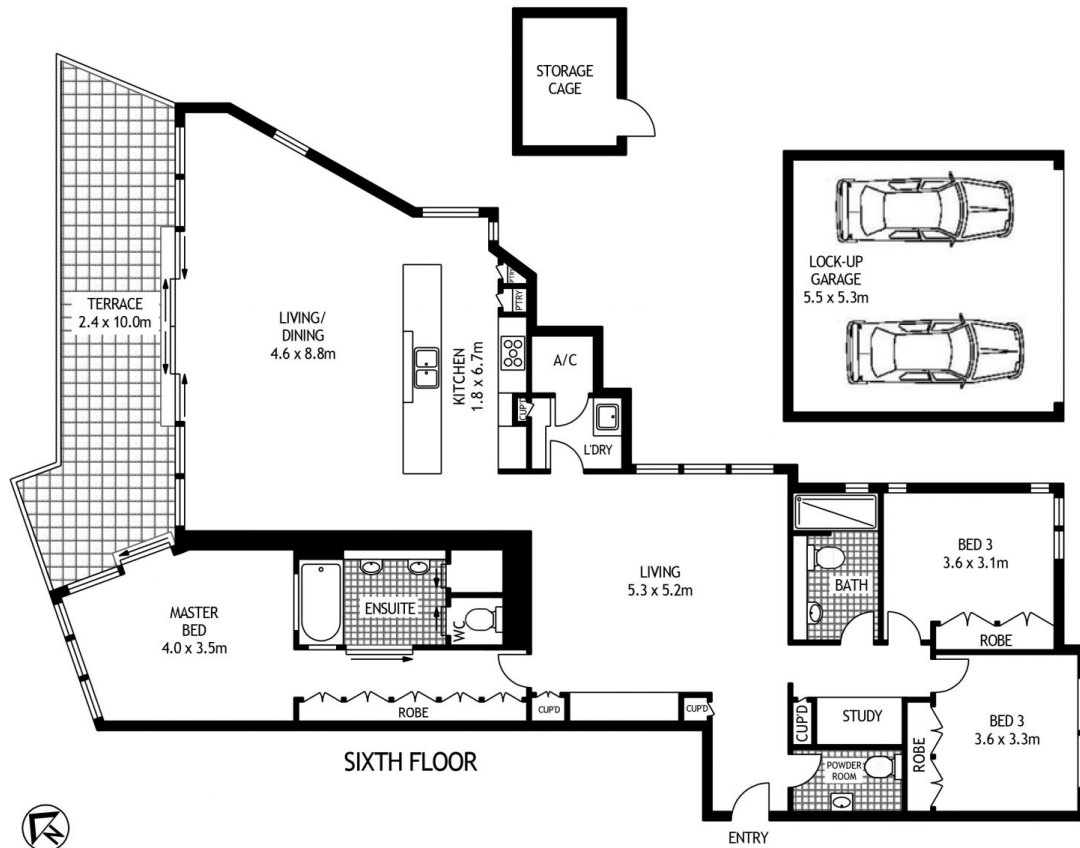
Agent

Nicole Beckett

 0409 896 152

 nicole@morton.com.au

morton.com.au



6D2 BOWMAN STREET

PYRMONT

SCAPE Floor Planning Disclaimer: This floor plan is conceptual only, it is provided for illustrative purposes only and should not be relied upon. We make no guarantees to the correctness of this plan. All interested parties should make and rely on their own enquiries in determining the accuracy of the information contained in this floor plan.