

morton.

Sydney 1410/38-42 Bridge Street

🛏 2 🚿 2 🚗 1

Stylishly appointed with views stretching to the majestic arch of the iconic Harbour Bridge, this superb residence defines effortless inner city living. Opening to the light of a northern aspect, the interiors are designed for easy living.

- Inviting open plan combined lounge and dining area
- Double bedrooms each have mirrored built-in wardrobes
- Good size master comes complete with an ensuite
- Deluxe kitchen, gas appliances, Caesarstone benches
- Ducted air conditioning, intercom access, internal laundry

This stunning home is ideally set just moments to a choice of museums, world famous theatres, cinemas, cafes, bus and ferry transport and the magnificent grounds of the Royal Botanic Gardens.

Available 27th November, 2020

With respect to the government's easing of restrictions around open homes but in a continuing effort to help stop the spread

morton.com.au

View

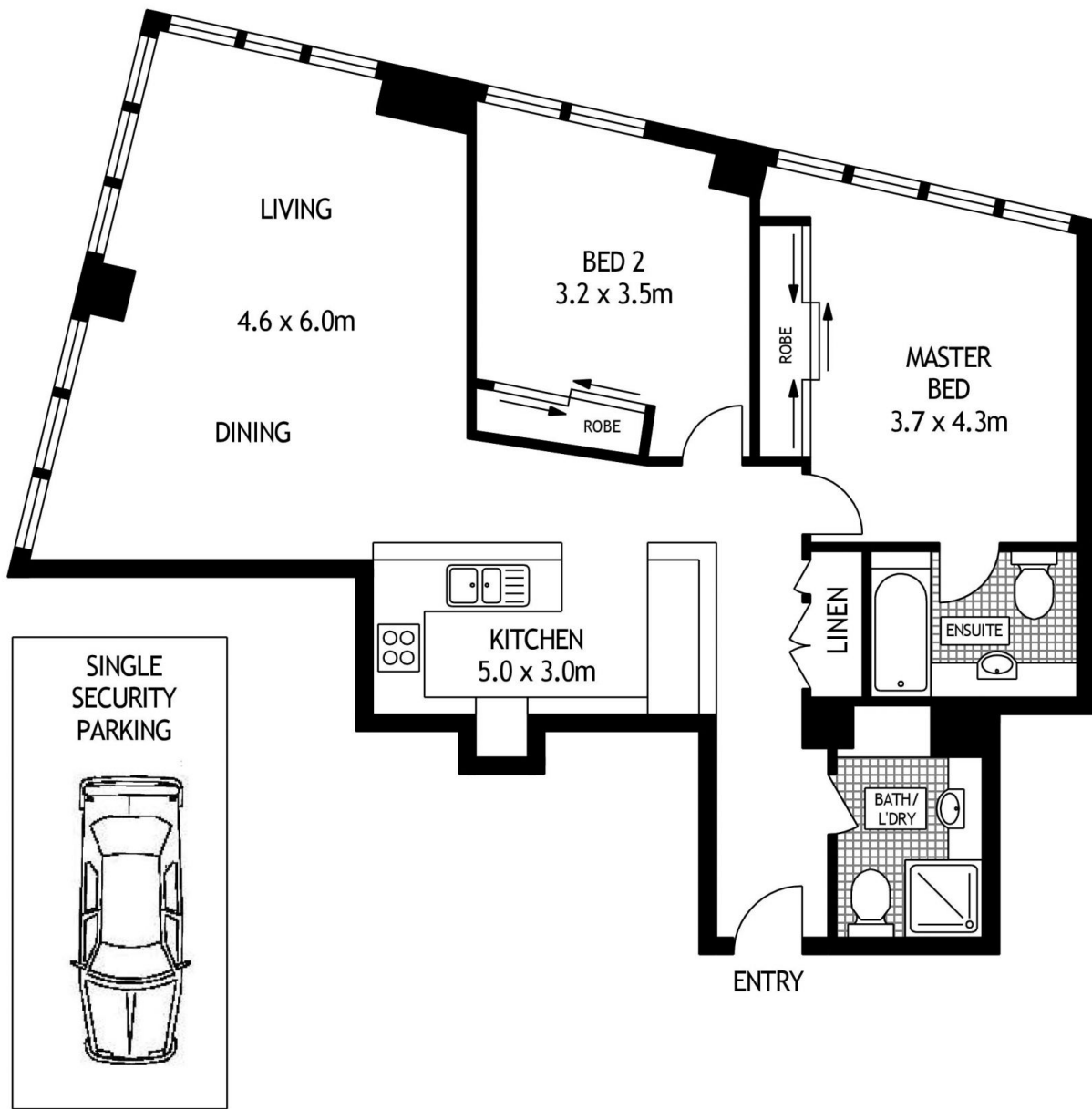
As advertised or by appointment

Agent

Naomie Texier

📞 0439 247 710

✉ naomie.texier@morton.com.au



FOURTEENTH FLOOR



1410/38 BRIDGE STREET

SYDNEY

SCAPE Floor Planing Disclaimer: This floor plan is conceptual only. it is provided for illustrative purposes only and should not be relied upon. We make no guaranteeas to the correctness of this plan. All interested parties should make and rely on their own enquiries in determining the accuracy of the information contained in this floor plan.