



morton.

Erskineville 1002/221-229 Sydney Park Road

 1  1  1

Positioned on Level 10 in the Zenix Tower is the brilliant North-facing one bedroom apartment. Featuring sweeping & unobstructed views of the City Skyline providing for a breath-taking backdrop both day & night.

The light & bright living area has direct access to an enclosed balcony with adjustable glass shutters & alfresco style dining area. The spacious bedroom features built-in robes & its own private balcony with easy access to a well appointed bathroom.

The property has an internal laundry, modern galley style kitchen with stainless steel appliances & direct access to a security parking space.

Located in a very desirable location opposite Sydney Park & just moments to St Peters Station, Newtown shops and Erskineville Village. Residents enjoy exclusive use of the beautiful landscaped gardens, outdoor pool & cabana area, tennis court & gymnasium this will be a popular choice for city

View

As advertised or by appointment

Agent

Sarah Fowell

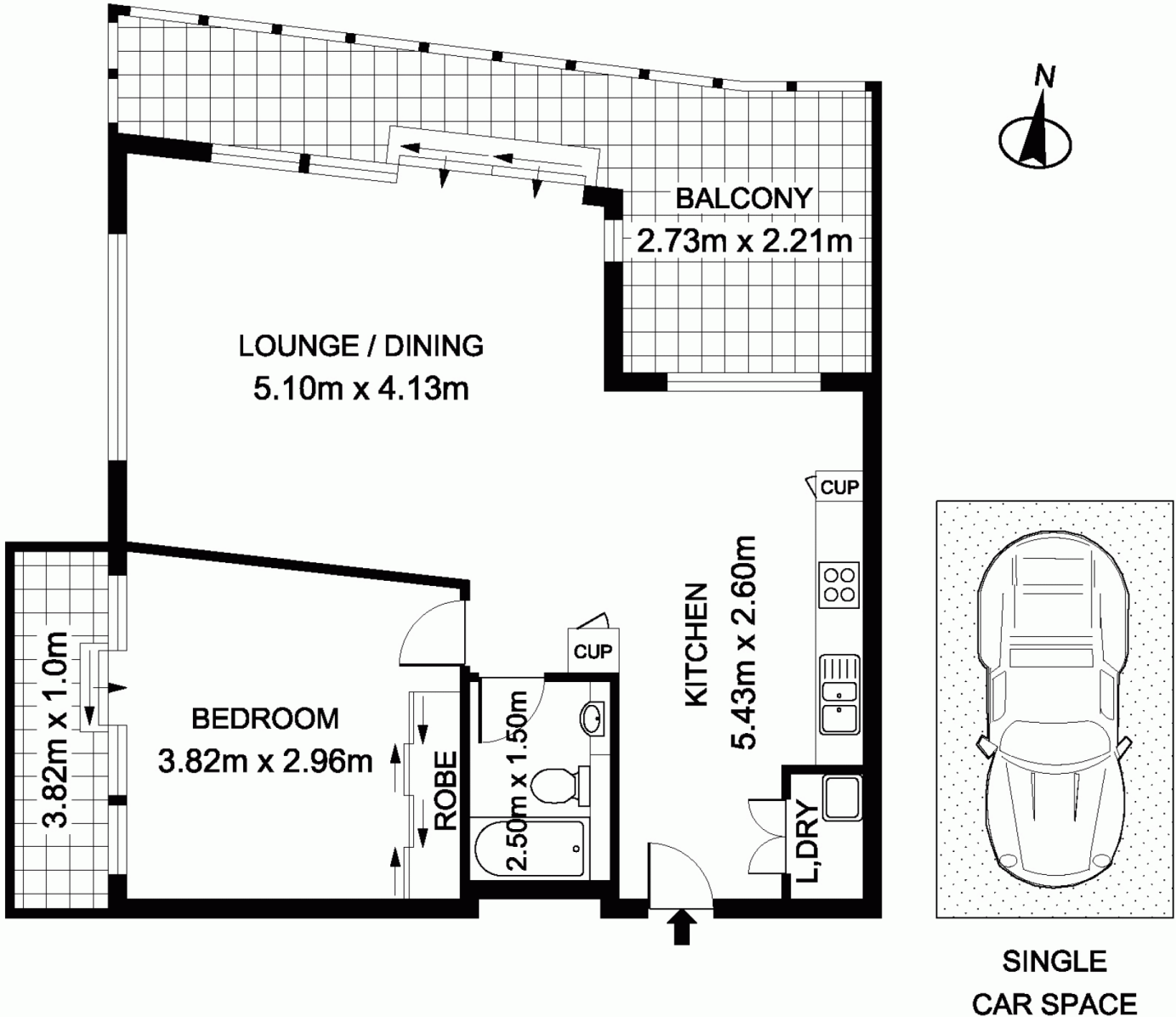
 0437 492 129

 sarah@morton.com.au

morton.com.au



1002/221 Sydney Park Road, Erskineville



The information above is provided in good faith and has been provided to us from a variety of sources. We have not verified whether the information is accurate and do not have any belief one way or other in its accuracy. We do not accept any responsibility to any person for its accuracy and do no more than pass it on. All interested parties should rely on their own inquiries in order to determine whether or not this information is in fact accurate.

Floor plan by www.squaremeter.com.au