



morton.

North Sydney 209/245 Pacific Highway



Set in a superb location convenient to both local/CBD transport and a cosmopolitan lifestyle where you are moments walk away from cafes, restaurants and minutes drive to the CBD is one of the newest additions to the North Sydney property market - Montrose North Sydney.

- Separate bedroom area, with floor to ceiling built-ins
- Quality fixtures and appliances
- Spacious open plan living and kitchen
- Sizeable enclosed balcony, with glass louvers
- Modern galley style kitchen, gas cooking and dishwasher
- Superb floor plan, with abundant natural light throughout
- Stylish bathroom with exceptional storage
- Located on the second floor, with Eastern aspect away from highway
- Hall cupboards and internal laundry with dryer
- Secure building, intercom and lift access
- Rooftop terrace, with cinema, function room and harbour views
- Secure storage cage in basement

morton.com.au

View

As advertised or by appointment

Agent

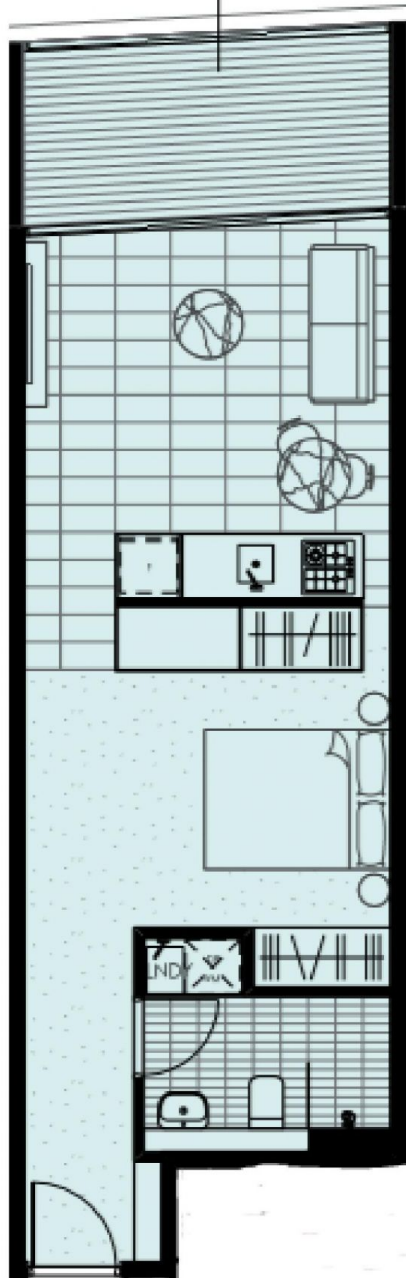
Sarah Fowell

📞 0437 492 129

✉️ sarah@morton.com.au

morton.

209



209/245 Pacific Highway, North Sydney