



**morton.**

**Penrith** 504/81C Lord Sheffield Circuit

 2  2  1

Located in the hub of North Penrith, Thornton Central offers convenient apartment living in a master-planned community. This popular design north-facing two-bedroom apartment is only metres from the Penrith rail hub, Westfield shopping centre and local parks.

#### Features


- Northerly aspect with covered balcony, ample natural light
- Entertainers kitchen with stone benchtops, soft close cupboards
- Four burner gas stove top with stainless steel appliances
- Blinds, Flyscreen and LED lighting, internal laundry with dryer
- Reverse-cycle split-system air conditioning
- Open living and dining with engineered timber flooring
- Wool-blend carpeted bedroom, mirrored built-in robes

#### View

As advertised or by appointment

#### Agent

**Anthony Fleming**

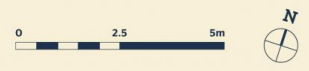
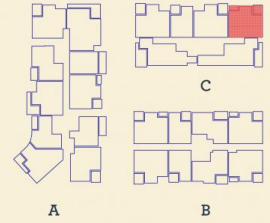
 0437 929 484

 [anthonyf@morton.com.au](mailto:anthonyf@morton.com.au)

**morton.com.au**

*Apartment*

2 BED- C 304



Internal	76 m <sup>2</sup>
External	8 m <sup>2</sup>
<b>Total</b>	<b>84 m<sup>2</sup></b>

DATE ISSUED 27/07/2015  
VERSION 02

Developed by St Hilliers FIRST POINT PROJECTS | Sales by LINK Home Land Direct [thorntoncentral.com.au](http://thorntoncentral.com.au)

**Disclaimer:** This floor plan has been prepared for marketing purposes only. All descriptions, dimensions, depictions and other details in this floor plan together, the "Information" may not be to scale. The vendor reserves the right to vary or amend the Information without notice. The Information may vary from the actual dimensions, layout and characteristics of the property as built. No third party has any authority whatsoever, either expressly or impliedly, to make or give any representation or warranty or to bind the vendor in connection with the information or the property.

**THORNTON**