



morton.

Hurstville 1410/23-31 Treacy Street

 2  2  1

Conveniently located within walking distance to Hurstville Westfield, the many eateries and the train station. This modern two-bedroom unit represents the upper standard of apartment living.

- Two bedrooms plus a study area
- Luxury block-out curtains, abundance of natural light
- Open balcony looking on to extraordinary city views
- Great sized living area with beautiful timber floorboards
- Bathrooms with beautiful tiles, abundance of storage
- Large master bedroom with great north facing views
- Quality designer kitchen with sleek gas appliances
- Security parking space and storage cage
- Air-conditioning, video intercom entry and lift access
- Beautiful communal sky gardens with landscaped surrounds
- Onsite building manager, communal BBQ areas

View

As advertised or by appointment

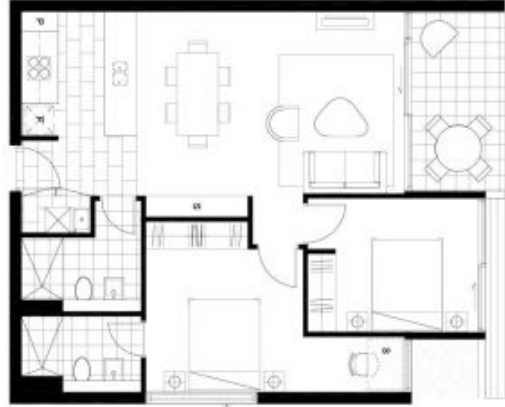
Agent

Nada Fayad

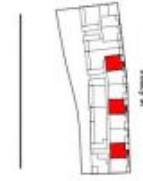
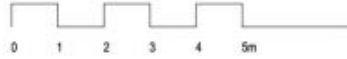
 0408 376 995

 nadaf@morton.com.au

morton.com.au



WINDOW TO
OL. MOONNA
AT NO 602, 701, 803,
1005, 1209 ONLY



IMPERIAL
HURSTVILLE

2 BEDROOM

LEVEL:
1 - 15

APARTMENT:
102, 105, 108, 111,
203, 209, 211, 213,
302, 306, 310, 403,
409, 411, 502, 506,
510, 603, 609, 611,
701, 706, 803, 806,
808, 907, 1003, 1005,
1008, 1102, 1203,
1206, 1209, 1301,
1303, 1308, 1403,
1405, 1408, 1410,
1502, 1504, 1509

INTERNAL
73 sqm

BALCONY
8 sqm

TOTAL
81 sqm

imperialhurstville.com.au
1800 782 998

PIETYTHP

Colliers International does not guarantee, warrant or represent that the information contained in this advertising and marketing document is correct. We exclude all inferred or implied terms, conditions and warranties arising out of this document and any liability for loss or damage arising there from.