



morton.

Pyrmont 163/3 Darling Island Road

 3  3  2

Dominated by breathtaking panoramic views that stretch uninterrupted across the sparkling harbour waters to the majestic city skyline and the iconic arch of the Harbour Bridge, this exquisite ultra contemporary penthouse is the epitome of elegance and sophistication.

- No expense spared with flawless designer appointments
- Vast interiors are bathed in streaming northern sunshine
- For/informal living, soaring ceilings, underfloor heating
- A wealth of internal and external entertaining options
- CaesarStone and marble kitchen, Miele gas appliances
- Palatial master with deluxe ensuite, walk-through robe
- C-Bus intelligence system, air con, home office, storage
- 25m lap pool, spa, sauna, gymnasium and a concierge
- Secure double car spaces + storage cage

View

As advertised or by appointment

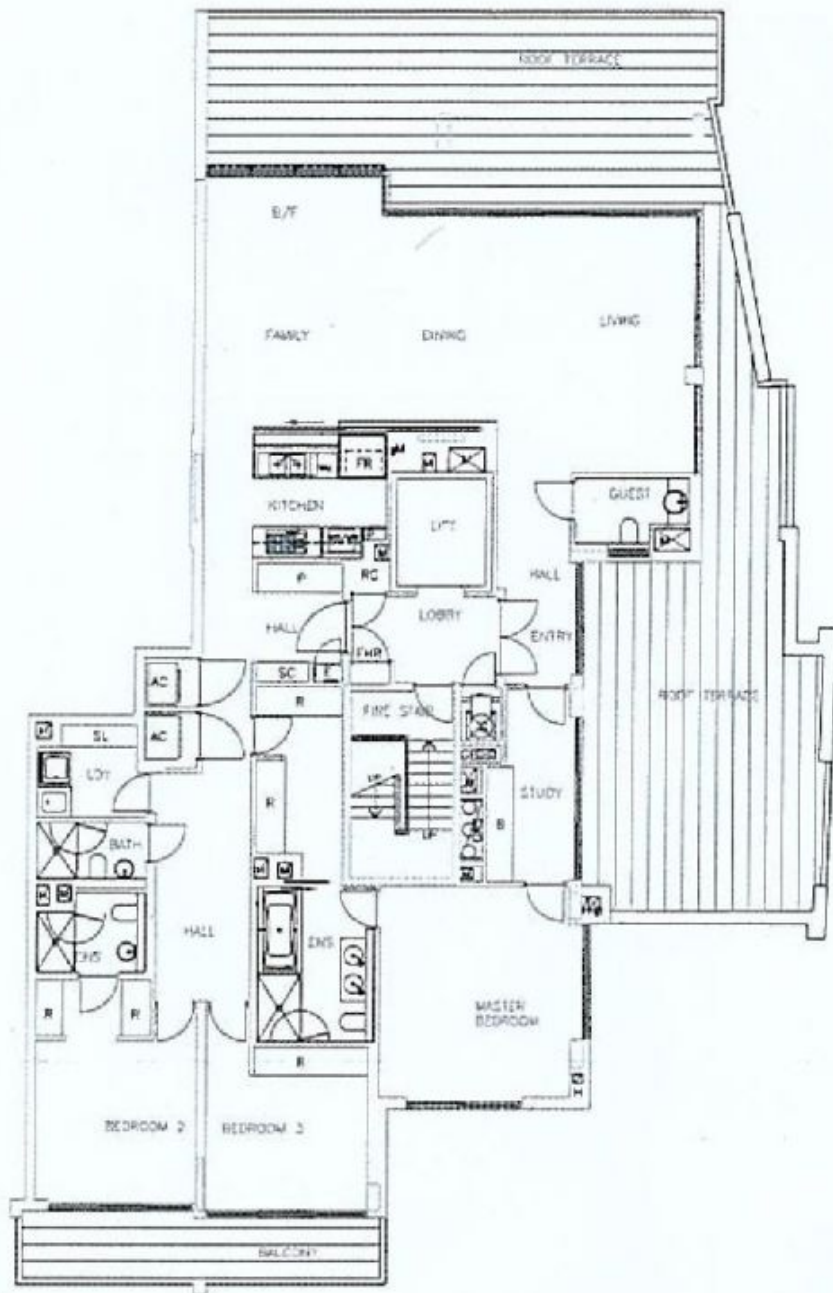
Agent

Sarah Fowell

 0437 492 129

 sarah@morton.com.au

morton.com.au



Apartment: B1-L6-03

