



morton.

Riverwood 517/5 Vermont Crescent

🛏 2 🚿 2 🚗 1

Located in "Lakeview", the latest stage of Washington Park, the fantastic apartment offers a modern & quality lifestyle in a beautiful, quiet and master planned community. With easy access to the M5 and only 20kms to the CBD.

APARTMENT FEATURES

- Reverse cycle air conditioning
- Stainless steel kitchen appliances
- Stone bench tops, mirror splash backs
- Wool carpets, efficient LED down lights
- Data/TV points in living and main bedroom
- Recessed mirrored cabinets in bathroom
- Separate study area & internal laundry
- Large open plan living/dining area opens onto balcony
- Two bedrooms both with built-in wardrobes
- Secure car space in basement plus storage cage
- Lift with intercom

View

As advertised or by appointment

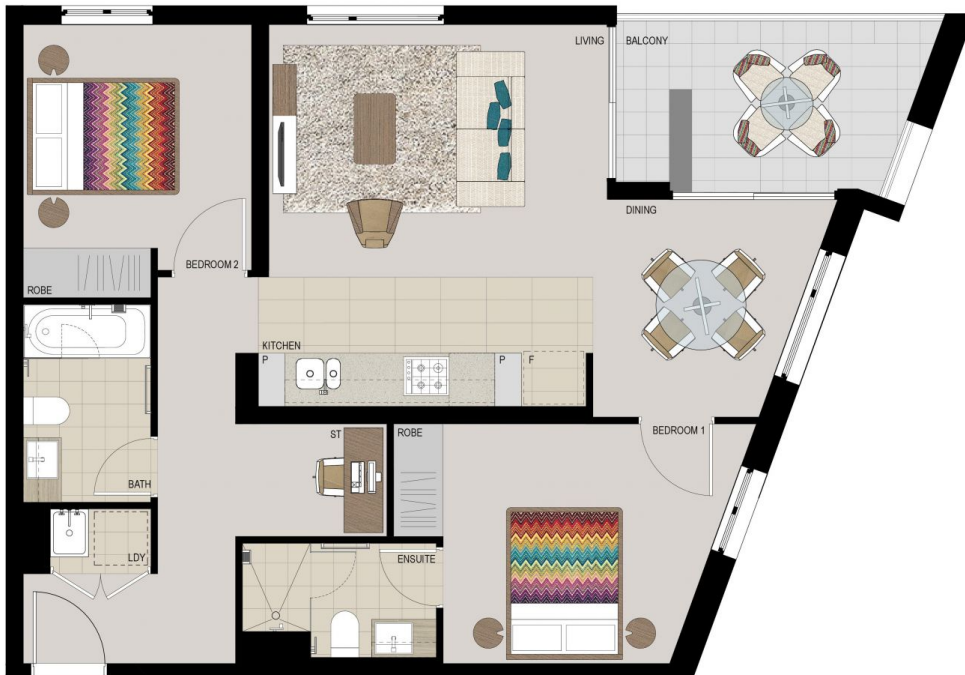
Agent

Lisa Xi

📞 0401 311 667

✉ lisa@morton.com.au

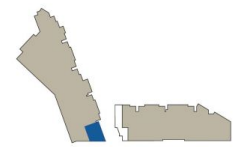
morton.com.au



**APARTMENT 517
LOT 80
2BED + STUDY**

Internal	75m ²
External	8m ²
Total	83m²

LAKEVIEW



1300 111 088
www.washingtonpark.com.au

Proudly developed by
PAYCE

Disclaimer: This floor plan has been prepared for marketing purposes only. All descriptions, dimensions, depictions and other details in this floor plan may not be to scale and may vary from the property as built. Your attention is drawn to the special conditions of the contract for sale of land. No third party has any authority to make or give any representation or warranty in relation to the property unless the representation or warranty is confirmed by Payce Communities No. 3 Pty Limited and included in the contract for sale of land. [Rev 8_31.10.13]

**We are
Washington Park.**