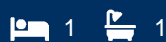




morton.

Surry Hills 3.30/517-527 Elizabeth Street



Perfectly located in the popular Surry Hills in a walk-everywhere location, this architecturally designed elevated one bedroom apartment is sure to impress.

- Open plan living with custom cabinetry and an abundance of storage
- Designer kitchen with gas cooking and marble benchtops
- Integrated fridge and Miele appliances
- Floor to ceiling glass to private balcony
- Ducted air-conditioning and LED strip lighting
- Marble bathroom with frame-less shower screen
- Carpeted bedroom with built-in wardrobes
- Internal laundry and study nook

View

As advertised or by appointment

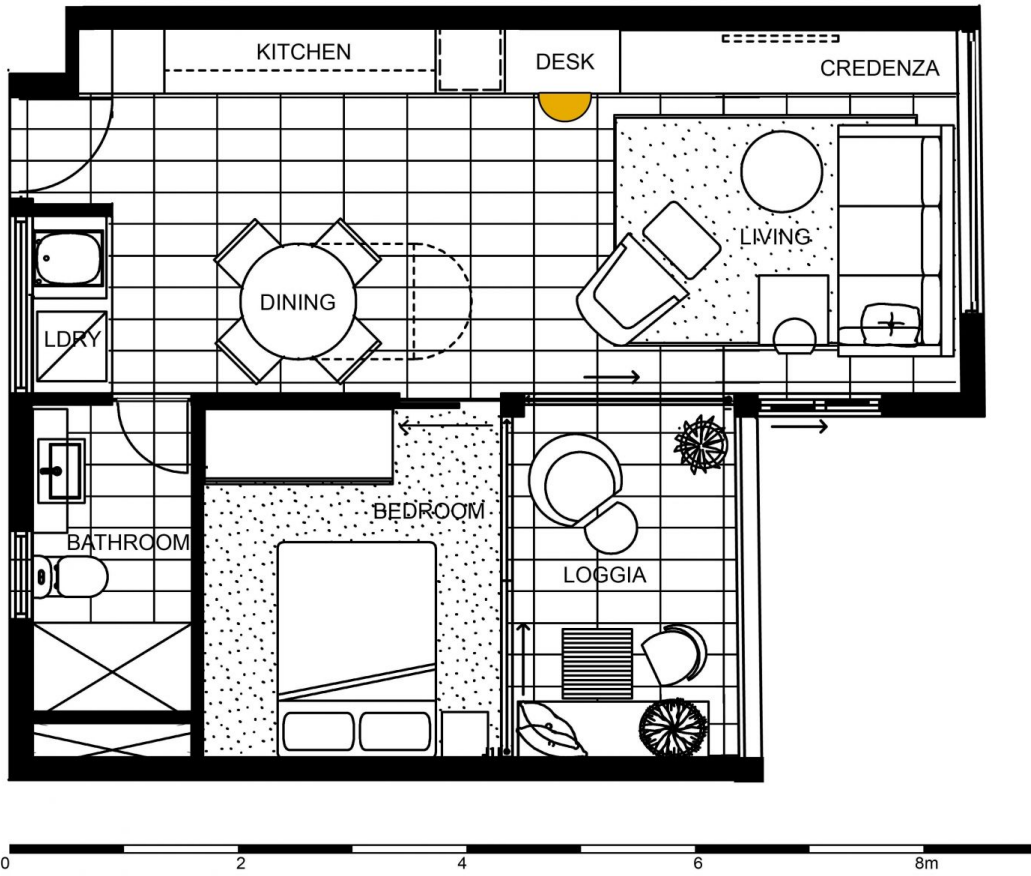
Agent

Sarah Fowell

📞 0437 492 129

✉️ sarah@morton.com.au

morton.com.au



Disclaimer: 1. Please note, this layout plan was produced prior to construction. 2. The information is believed to be correct, but is not guaranteed. 3. Changes may be made during construction and dimensions, areas, fittings, finishes and specifications are subject to change without notice in accordance with the provisions of the contract for sale. 4. The furniture and furnishings depicted are not included with any sale and purchasers must refer to their contract for sale for the list of inclusions. 5. The position of the furniture and furnishings should not be taken to be indicative of final positions of power points, tv connection points and the like. 6. Prospective purchasers must rely on their own enquiries. 7. All graphics including tile layout and balustrades and the like are indicative only. 8. Bulkheads for serves are not depicted. 9. The layout plan is at an unspecified scale.

EAST CENTRAL

www.eastcentral.com.au

1 bedroom
Units 26, 30

Apartment size 45.2sqm

517 & 527 Elizabeth Street,
Surry Hills

