



morton.

Woolloomooloo 235/6 Cowper Wharf Roadway

 1  1

Combining an historic maritime industrial aesthetic with a contemporary lifestyle, this stylish apartment has absolute waterfront views towards Potts Point and Garden Island. Currently tenanted at \$695pw.

- Combined lounge and dining flows to the balcony
- Positioned in the "residential South"
- Ducted air conditioning, video access
- Superb views across the sparkling harbour waters
- Well appointed granite kitchen has gas appliances
- 24 hour onsite security

View

As advertised or by appointment

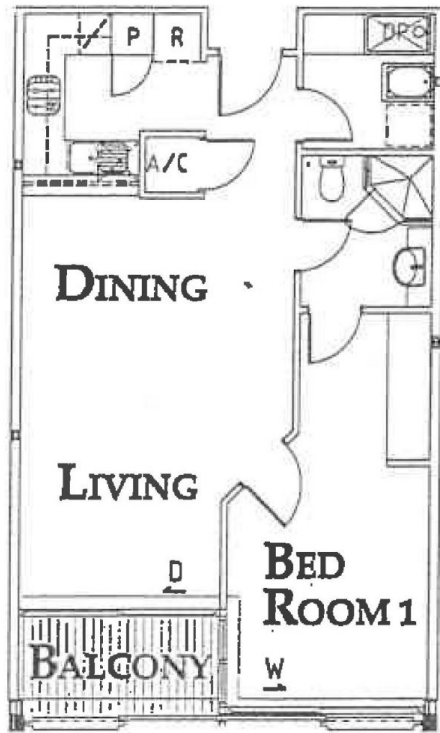
Agent

Noel Jenkins

 0410 593 694

 noel@morton.com.au

morton.com.au



**THE
WHARF**

**UNIT No.
2-35**

