



morton.

Wentworth Point 343/7 Baywater Drive

 3  3  2

A superb combination of size, quality and elevated outlooks provides the key to success with this deluxe executive residence. Featuring a generous 173sqm in/outdoor living space, plus double parking and storage, it offers an excellent opportunity to purchase a spacious contemporary home with sleek interiors, lots of natural light throughout and a great lifestyle position that's just a few footsteps to the village hub.

- A prime corner position with elevated outlooks
- Bright and airy open design with open living area
- Wide BBQ terrace plus a second balcony at the rear
- Gas kitchen with stone benches and breakfast bar
- Three bedrooms include two with ensuite, large main
- Two security car spaces and lock-up storeroom on title
- Air-conditioning, security entrance and excellent storage


View

As advertised or by appointment

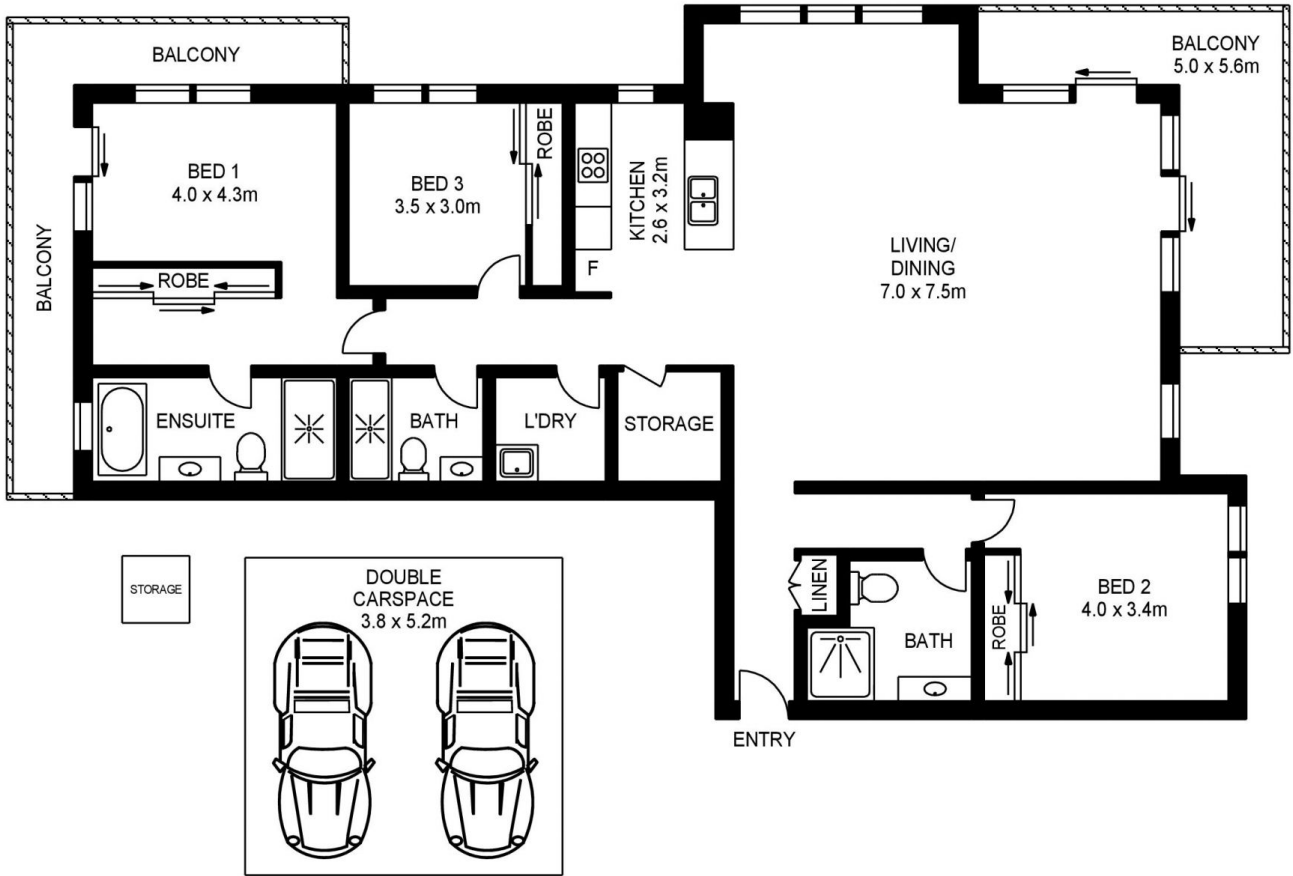
Agent

Dylan Choe

 0416 932 977

 dylanchoe@morton.com.au

morton.com.au



APPROX. INT. AREA : 143m²

APPROX. EXT. AREA : 91m²

343/7 BAYWATER DRIVE, WENTWORTH POINT



www.assetphotographers.com.au

Please note these measurements are approximate only. The plans are intended as a rough guide for illustrative purposes. It is not warranted or guaranteed to be correct nor is it a part of the sale or rental contract.

