



morton.

Sydney 113/289 Sussex Street

 3  3  2

Perfectly placed within the dynamic hub of Sydney's central district, this superbly presented 3 bedroom apartment at the iconic Millennium Towers affords generously sized and flowing interiors highlighted by vibrant city views. This residence is ripe for personalisation and includes resident resort-style facilities as well as immediate access to an array of exciting entertainment and shopping choices.

- Sub-Penthouse -20th Floor position with expansive open floor plan
- Wrap around entertainers' balcony overlooking Darling Harbour and the City
- Well-appointed, large open plan gas kitchen
- Master bedroom boasting walk-in robe and ensuite
- 3 bedrooms, all with built-in robe
- Modern bathrooms, main with spa tub
- Internal laundry room and multiple storage cupboards
- 24 hour concierge and secure intercom entry
- Double car lock-up garage
- Facilities include heated pool, gym, spa and sauna

View

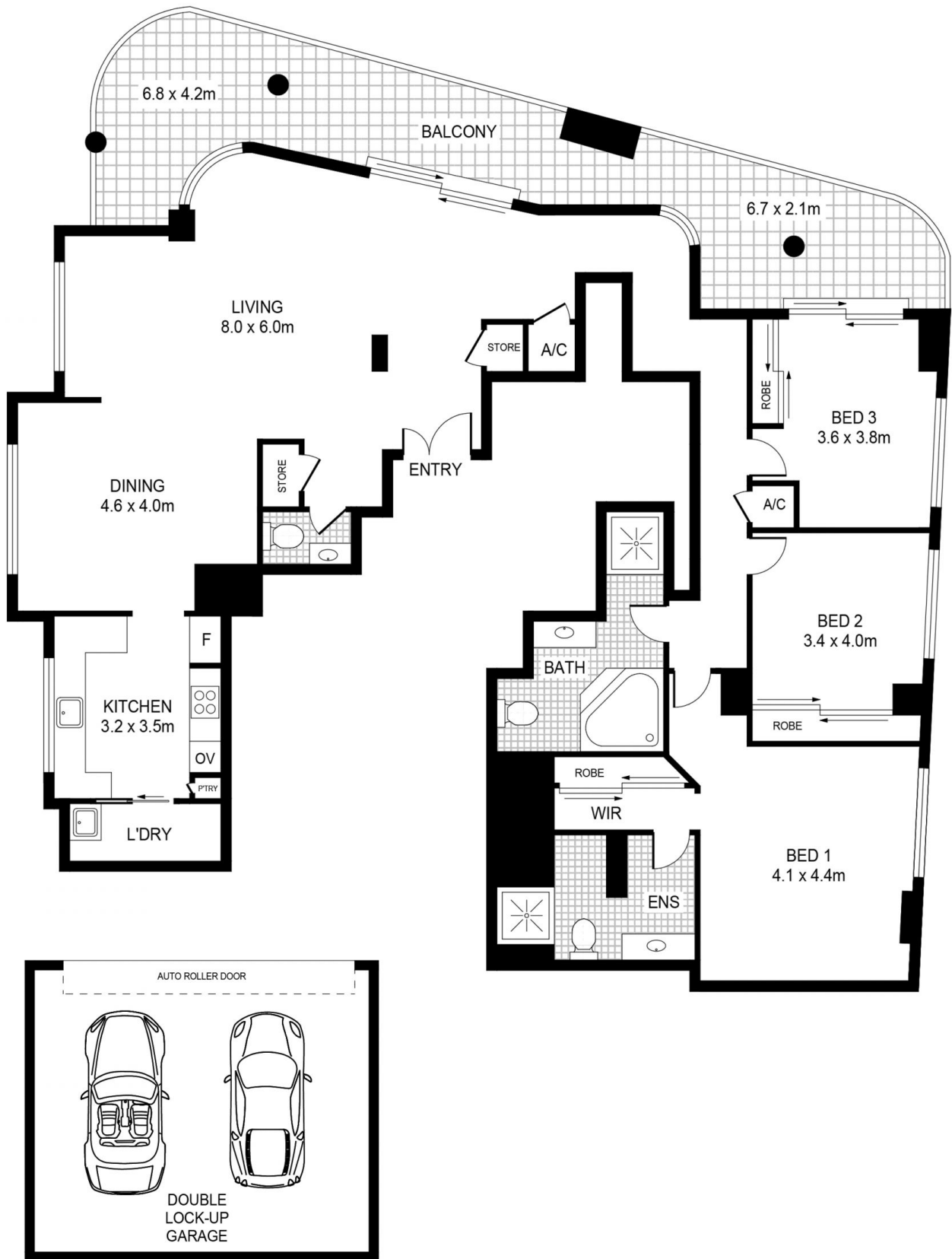
As advertised or by appointment

Agent

Morton RE

 [rentals@morton.com.au](tel:)

morton.com.au



PLANS SHOWN ONLY INDICATIVE OF LAYOUT. DIMENSIONS ARE APPROXIMATE.



SYDNEY 113/289 Sussex Street

morton.