



morton.

North Sydney 212/225-235 Pacific Highway

 2  2  1

A exceptional lifestyle haven of contemporary style, space and convenience. Close to amenities and only a short stroll to the heart of North Sydney giving access to a range of café, dining, shops, Mater hospital and transport options, its timeless appeal is unquestionable.

- Double bedrooms with built-ins, master with ensuite
- Open lounge & dining area, modern bathrooms and an internal laundry
- Deluxe stone benchtop, open kitchen with gas cooking and Miele appliances
- Timber floor in living room and kitchen
- Resort style facilities including rooftop gardens, gym and an infinity edge pool
- Walk to North Sydney train station
- Infinity pool plus gym facilities
- Security basement car park and spacious 6 sqm storage

View

As advertised or by appointment

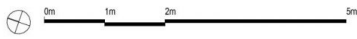
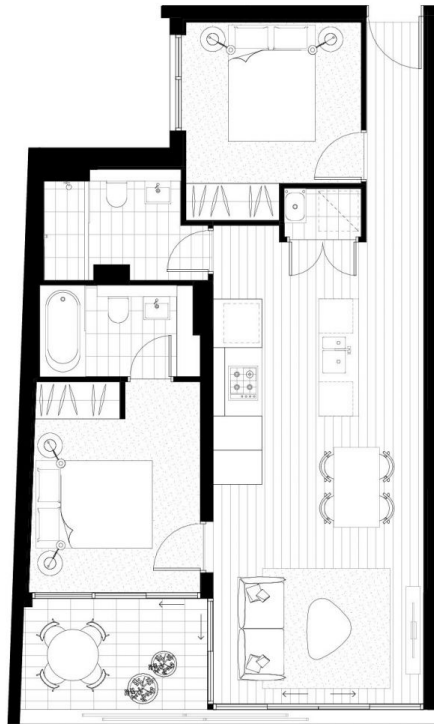
Agent

Morton



 info@morton.com.au

morton.com.au



Disclaimer: The particulars are set out as a general outline for the guidance of intending purchasers and do not constitute an offer or contract. All descriptions, dimensions, references to conditions and necessary permissions for use and other details are given in good faith and are believed to be correct, but any intending purchaser should not rely on them as statements or representations of fact, but must satisfy themselves by inspection or otherwise to the correctness of each fact, and where necessary seek advice. No third party supplier or their agents has any authority to make or give any representation or warranty in relation to this property.

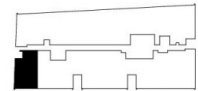
GREENLAND PRESENTS
LUCENT
 NORTH SYDNEY

UNIT NUMBER
 112, 212, 311, 511



**TWO BEDROOM
 APARTMENT**

Internal Area 68m²
 External Area 7m²
 Total Area 75m²



1800 207 778
lucentnorthsydney.com.au

