



**morton.**

**Surry Hills** 8-10 Fitzroy Place

 1  1  1

Newly completed and available now, a choice of stunning one, two and three-bedroom apartments in 'The Fitzroy', a boutique new development tucked away in a hidden cul-de-sac between Crown and Bourke Streets on the city fringe.

All apartments claim a north aspect and showcase oversized floor plans creating a unique sense of space, premium quality finishes and generous courtyards or balconies with lift access and sweeping views to the city from the upper floors.

Defined by solid brick construction with curved concrete walls, open breezeways and an aluminium-bladed facade, the building exudes a style and glamour rarely seen in new developments, with meticulous attention to detail and an aesthetic perfectly complementing its urban setting.

All apartments claim a north aspect and include private storage cages; 11 of the 18 residences come with secure parking, and the building is crowned by a rooftop terrace offering panoramic district and city skyline views. 'The Fitzroy'

**morton.com.au**

**View**

As advertised or by appointment

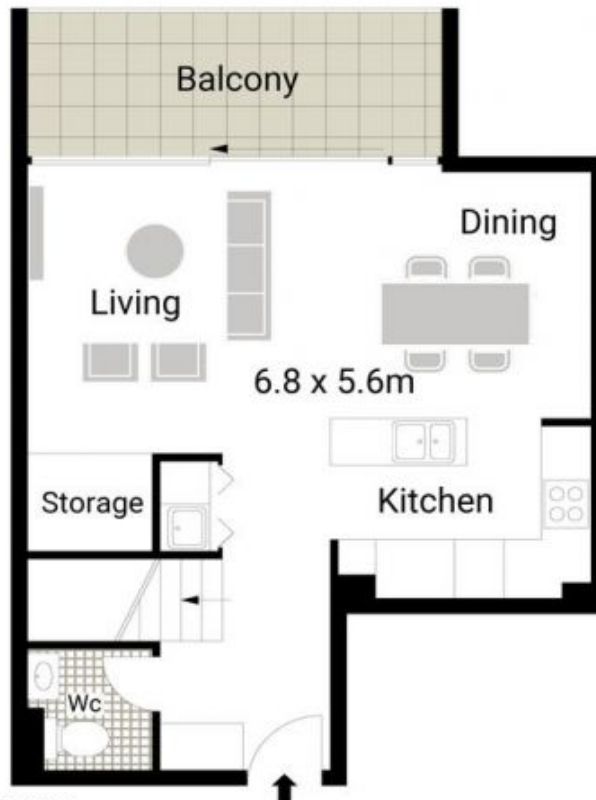
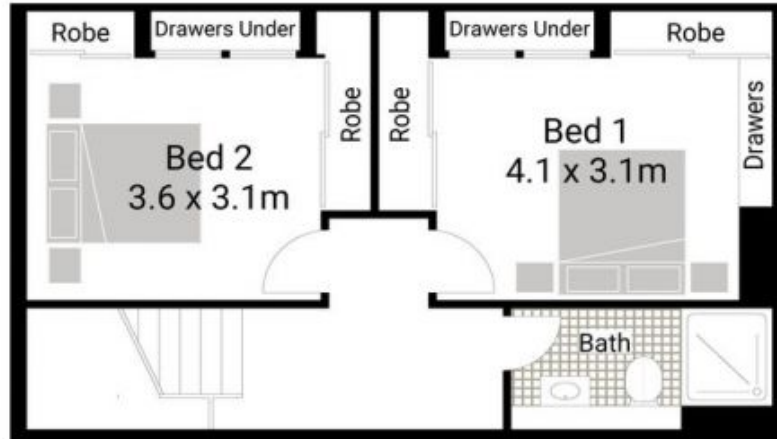
**Agent**

**Ettiene West**

 0410 593 749

 ettiene@morton.com.au

**THE FITZROY**  
8 Fitzroy Place Surry Hills



INTERNAL AREA :- 89 SQM  
BALCONY AREA :- 10 SQM  
TOTAL :- 99 SQM



303 / 8 Fitzroy Place, Surry Hills

All information contained herein is gathered from sources we believe to be reliable. We cannot however guarantee its accuracy and interested parties should make and rely on their own enquiries

