



# morton.

Zetland 519/1 Hutchinson Walk

1 1 1

Located within Victoria Park's most sophisticated residence, 'Platinum' presents flowing open spaces, polished interiors, high quality finishes and the perfect metropolitan address. Just 3km to the CBD and a short walk to the vibrant dining and retail precinct of East Village, this residence is a superb investment ready to go or a rewarding first step on the property ladder.

- 5th floor apartment with picturesque outlook
- Spacious layout with open plan living and dining
- Private alfresco balcony with district views
- Sleek integrated Miele kitchen with stone bench tops
- Bright and peaceful bedroom with walk-in robes
- Designer bathroom; LED lights throughout; European laundry
- Resident's health club, with spa, gymnasium and steam rooms
- Security video intercom and lift access
- Single secure car space

#### View

As advertised or by appointment

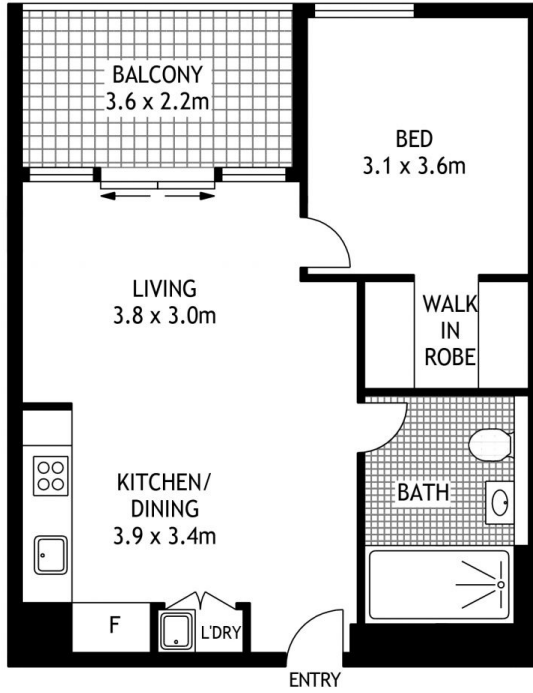
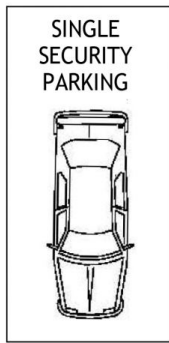
#### Agent

**Morton**



info@morton.com.au

[morton.com.au](http://morton.com.au)



519/1 HUTCHINSON WALK

ZETLAND

SCAPE Floor Planing Disclaimer: This floor plan is conceptual only. It is provided for illustrative purposes only and should not be relied upon. We make no guarantees to the correctness of this plan. All interested parties should make and rely on their own enquiries in determining the accuracy of the information contained in this floor plan.