



# morton.

**Penrith** 202/101D Lord Sheffield Circuit

 1  1  1

Located next to Penrith train station and across the rail line to Westfield, this 65 sqm one bedroom unfurnished apartment in the as-new Thornton development (completed December 2016), offers convenient living in a master planned community only metres from all the amenities and transport you'd expect.


- Carpeted open plan living/dining with reverse cycle air conditioning
- Filled with natural light from the floor to ceiling windows
- Large north/east facing balcony
- Large internal laundry with omega dryer
- Entertainers gas kitchen with CaesarStone bench top, soft close kitchen draws and cupboards and stainless steel omega appliances
- NBN ready, efficient LED ceiling downlights and data/TV points in living and bedroom
- Mirrored cabinets in the bathroom with shower head rose
- Security building, storage cage and intercom access
- Pets on application

### View

As advertised or by appointment

### Agent

**David Lipman**

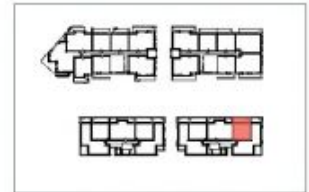
 0409 663 535

 david@morton.com.au

[morton.com.au](http://morton.com.au)



# Apartment D202 1 Bed



Internal	54 m <sup>2</sup>	N
External	14 m <sup>2</sup>	⊗
<b>Total</b>	<b>68 m<sup>2</sup></b>	

0 2.5 5m

**THORNTON**  
ThorntonCentral.com.au

Disclaimer: This floor plan has been prepared for marketing purposes only. All dimensions, descriptions and other details in this floor plan together with the "Information" may not be to scale. The vendor reserves the right to vary or amend the information without notice. The information may vary from the actual dimensions, layout and characteristics of the property as built. No third party has any authority whatsoever either as agent or in any way, to make or give any representation or warranty or to bind the vendor in connection with the information of the property.  
Dedicated: 23/02/2014. Version: 01