



morton.

Wentworth Point 412/48 Amalfi Drive

 1  1  1

The Waterfront is located moments to Sydney Olympic Park main venues, train station, Bicentennial Park and Millennium Parklands. Located in Messina, this is your opportunity to move into this one bedroom apartment only a short stroll from The Promenade and The Piazza.

- Located on level four
- Combined living and dining rooms
- Air conditioning
- Full size kitchen with designer modern stainless steel appliances
- Gas cooking and quality finishes throughout
- Generous size separate living area
- Good size bedroom with built-in wardrobe
- Good size balcony
- Laundry room and clothes dryer
- Single car spaces and storage cage.

View

As advertised or by appointment

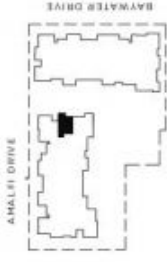
Agent

Morton RE



 rentals@morton.com.au

morton.com.au



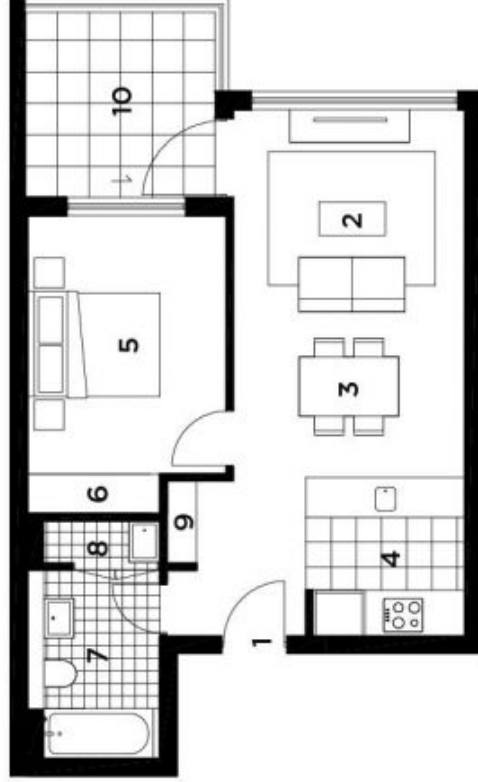
LOCATION

**UNIT 412
1 BEDROOM**

INTERNAL 51 sqm
BALCONY 8 sqm
TOTAL AREA 59 sqm

KEY:

- 1 Entry
- 2 Living
- 3 Dining
- 4 Kitchen
- 5 Bedroom
- 6 Wardrobe
- 7 Bathroom
- 8 Laundry
- 9 Store
- 10 Balcony



28.10.2010
REV. D



Disclaimer: The particulars are not intended as a contract. All measurements, dimensions, elevations and details are for information only and are subject to change without notice. The advertiser and the developer do not warrant the accuracy of the information provided. The advertiser and the developer do not warrant the accuracy of the information provided. The advertiser and the developer do not warrant the accuracy of the information provided.

