



morton.

Wentworth Point 305/19 Hill Road

 2  2  1

The Waterfront is located moments to Sydney Olympic Park main venues, train station, Bicentennial Park and Millennium Parklands. Located in Sorrento, this is your opportunity to move into this split level two bedroom apartment only a short stroll from The Promenade and The Piazza.

- Split level apartment located on level three
- Combined living and dining rooms
- Reverse cycle air conditioning
- Good size kitchen with stainless steel appliances
- Gas cooking and lots of cupboard space
- Great size bedrooms with built-in wardrobes
- Laundry room and clothes dryer
- Secure undercover car space and a storage cage

View

As advertised or by appointment

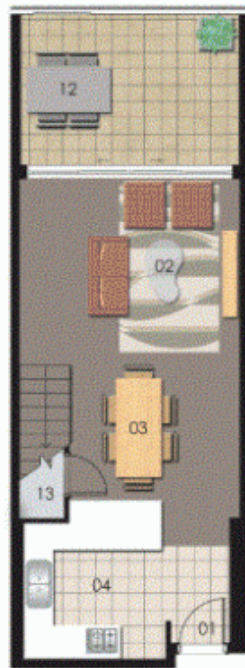
Agent

Morton RE

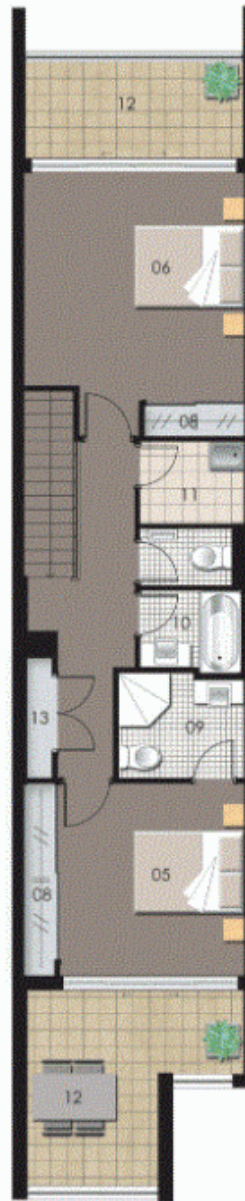


 rentals@morton.com.au

morton.com.au



LEVEL 3



LEVEL 4



ENTRY	01	WARDROBE	08
LIVING	02	ENSUITE	09
DINING	03	BATHROOM	10
KITCHEN	04	LAUNDRY	11
BEDROOM 1	05	BALCONY	12
BEDROOM 2	06	STORAGE	13
BEDROOM 3	07		



Unit 305

Lot Number	11
Type	2 Bedroom
Unit Area	94 sqm
Balcony	29 sqm
Total	123 sqm