



**morton.**

**Wentworth Point** 508/12 Nuvolari Place



The Waterfront is located moments to Sydney Olympic Park main venues, train station, Bicentennial Park and Millennium Parklands. Located in Alora, this is your opportunity to move into this two bedroom apartment only a short stroll from The Promenade and The Piazza.

- Apartment located on level five
- Combined living and dining rooms
- Air conditioning
- Open kitchen
- Gas cooking and quality finishes throughout
- Good size bedroom with built-in wardrobes
- Laundry room and clothes dryer
- Single car space and storage cage.

**View**

As advertised or by appointment

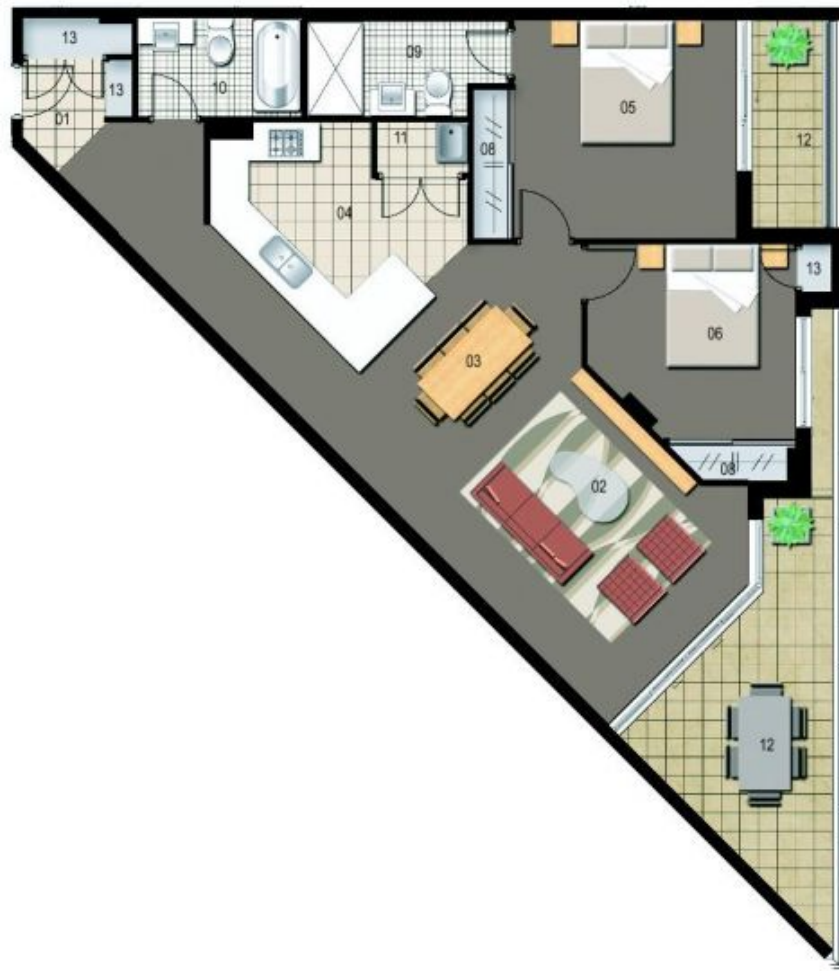
**Agent**

**Morton RE**



rentals@morton.com.au

**morton.com.au**



ENTRY	01	WARDROBE	08
LIVING	02	ENSUITE	09
DINING	03	BATHROOM	10
KITCHEN	04	LAUNDRY	11
BEDROOM 1	05	BALCONY	12
BEDROOM 2	06	STORAGE	13
BEDROOM 3	07		



### Unit 307

Lot Number	17
Type	2 Bedroom
Unit Area	90 sqm
Balcony	18 sqm
Total	108 sqm

Disclaimer: All layouts are indicative only, and subject to change.

12.05.06 : Revision D