



morton.

Wentworth Point 308/4 The Piazza

 2  2  1

The Waterfront is located moments to Sydney Olympic Park main venues, train station, Bicentennial Park and Millennium Parklands. Located in The Piazza, this is your opportunity to move into this two bedroom apartment only a short stroll from The Promenade and The Piazza.

- Split system air conditioning
- Stainless steel appliances and gas cooking
- Generous size living areas
- Good size bedrooms with built-in wardrobes,
- Balcony on each side allowing natural ventilation
- Internal storage space
- Laundry room and clothes dryer
- Single lock up garage

View

As advertised or by appointment

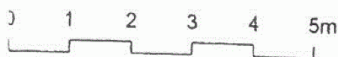
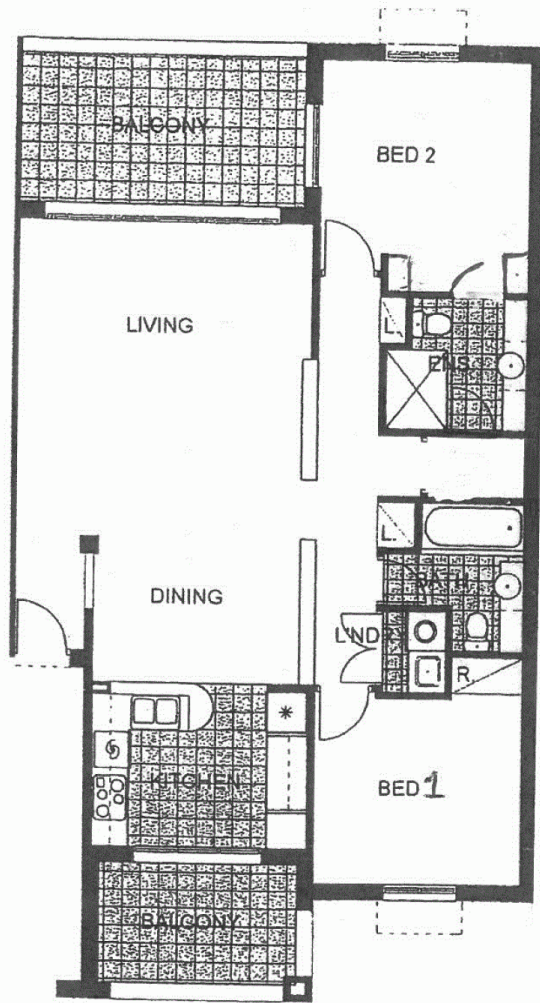
Agent

Morton RE



 rentals@morton.com.au

morton.com.au



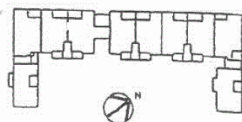
"The information contained herein is intended as an introduction to the the general content of the project and is subject to variation. Interested parties should rely on their own enquiries and the contract for sale. The developer reserves the right to vary from these descriptions as it deems necessary or as any relevant authority may require."



2 BEDROOM

APARTMENT 308

TYPE-C



SANTORINI