



morton.

Wentworth Point 313/3 Amalfi Drive

 2  2  1

Very well presented two bedroom apartment located close to The Promenade with great waterviews from a covered entertainers balcony. Features include:

- Open plan living and dining area
- Main bedroom with waterviews + ensuite
- Large entertainers balcony
- Split system air conditioning in living area
- Built-in wardrobes
- Full size kitchen
- Gas cooking + stainless steel appliances
- Internal laundry with dryer
- Internal storage
- One car space
- Access to outdoor pool

View

As advertised or by appointment

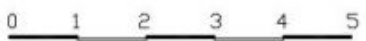
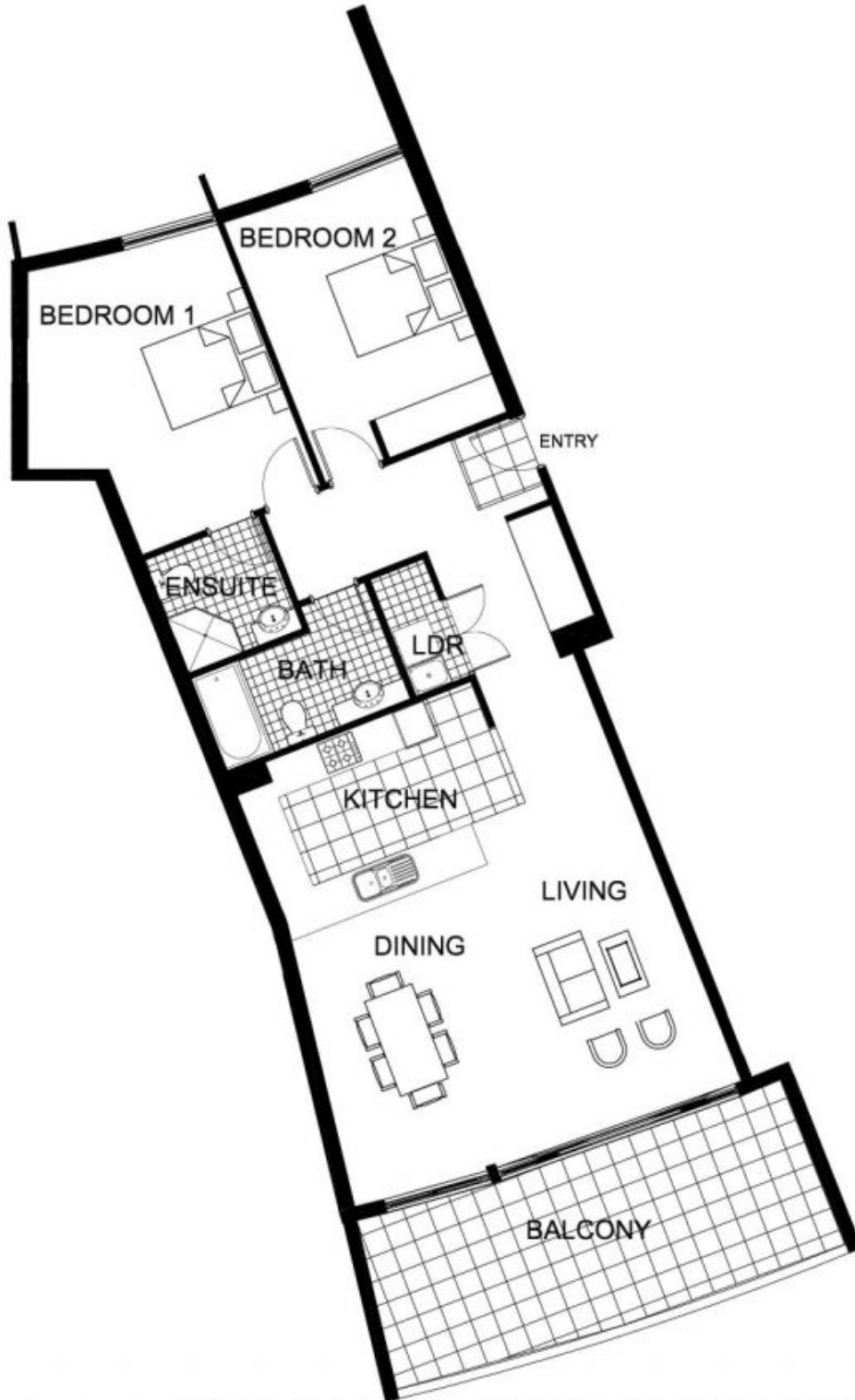
Agent

Morton RE



 rentals@morton.com.au

morton.com.au



The information contained herein is intended as an introduction to the general content of the project and is subject to variation. Interested parties should rely on their own enquiries and the contract for sale. The developer reserves the right to vary from these descriptions as it deems necessary or as any relevant authority may require.



2 BEDROOM **APARTMENT 313 (Original No.303)** **TYPE L**

INTERNAL AREA 97 sqm OUTDOOR AREA 17 sqm TOTAL AREA 114 sqm

LEVEL 3

MONACO