



**morton.**

**Wentworth Point** 226/3 Stromboli Strait

 1  1  1

The Waterfront is located moments to Sydney Olympic Park main venues, train station, Bicentennial Park and Millennium Parklands. Located in Napoli, this is your opportunity to move into this one bedroom apartment only a short stroll from The Promenade and The Piazza.

- Luxurious apartment located on level two
- Combined living and dining rooms
- Open kitchen with stainless steel appliances
- Great size rectangular balcony
- Gas cooking and quality finishes throughout
- Good size bedroom with built-in wardrobes
- Laundry room and clothes dryer
- Single car space

**View**

As advertised or by appointment

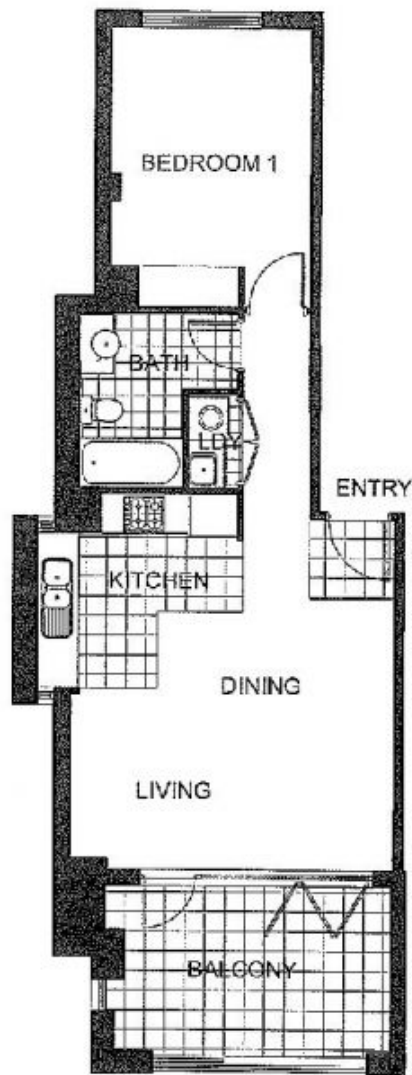
**Agent**

**Morton RE**

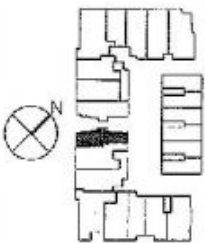


 rentals@morton.com.au

**morton.com.au**



\*The information contained herein is intended as an introduction to the general content of the project and is subject to variation. Interested parties should rely on their own enquiries and the contract for sale. The developer reserves the right to vary from these descriptions as it deems necessary or as any relevant authority may require.



LEVEL 2



**THE WATERFRONT**

AT HOMERBURN BAY

1 BEDROOM	APARTMENT 226	TYPE G2
INTERNAL AREA 51 sqm	OUTDOOR AREA 11 sqm	TOTAL AREA 62 sqm

**NAPOLI**