



morton.

Wentworth Point 807/14 Baywater Drive

 2  2  2

The Waterfront is located moments to Sydney Olympic Park main venues, train station, Bicentennial Park and Millennium Parklands. Located in Messina, this is your opportunity to move into this two bedroom apartment only a short stroll from The Promenade and The Piazza.

- Located on level eight
- Combined living and dining rooms
- Air conditioning
- Full size kitchen with designer modern stainless steel appliances
- Gas cooking and quality finishes throughout
- Generous size separate living areas
- Good size bedrooms with built-in wardrobes
- Good size balcony
- Laundry room and clothes dryer
- Double car spaces and storage cage.

View

As advertised or by appointment

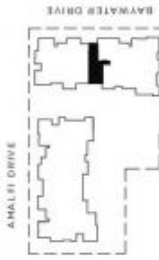
Agent

Morton RE



 rentals@morton.com.au

morton.com.au



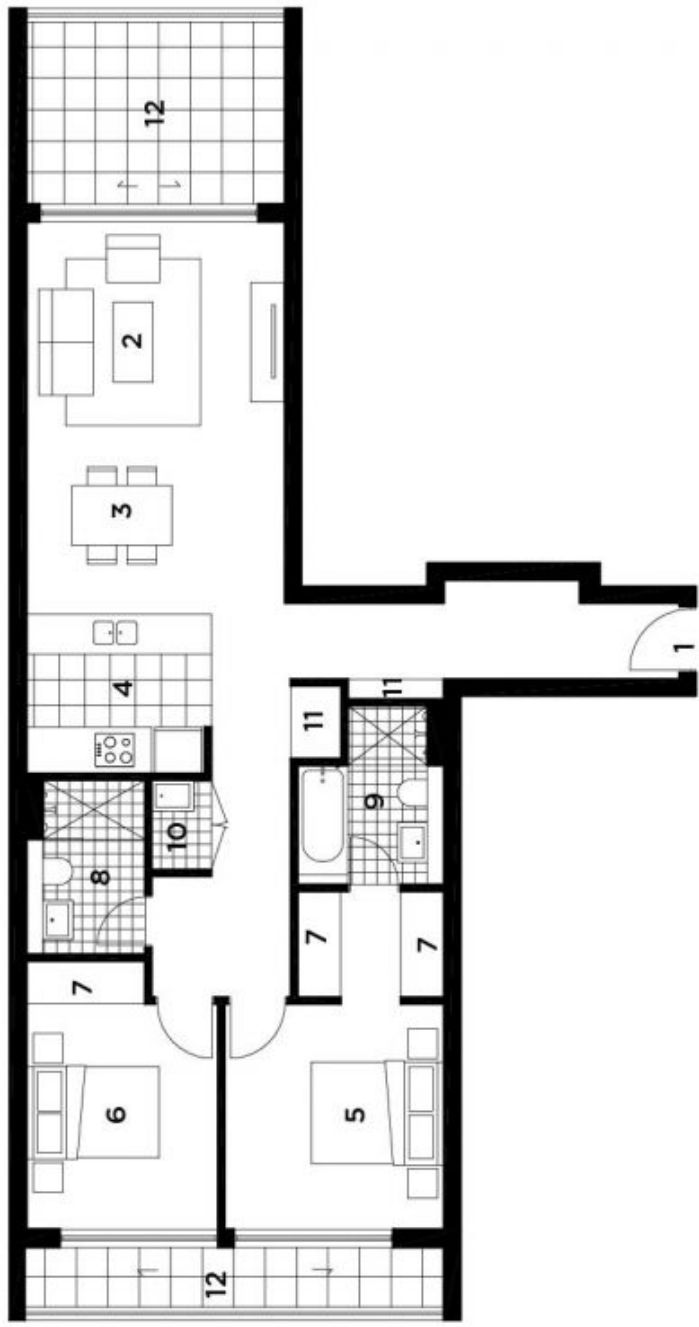
LOCATION

**UNIT 807
2 BEDROOM**

INTERNAL	86 sqm
BALCONY	16 sqm
TOTAL AREA	102 sqm

KEY:

- 1 Entry
- 2 Living
- 3 Dining
- 4 Kitchen
- 5 Bedroom 1
- 6 Bedroom 2
- 7 Wardrobe
- 8 Bathroom
- 9 Ensuite
- 10 Laundry
- 11 Store
- 12 Balcony



28.10.2010
REV. D



Exclusion: The architect is not responsible for the accuracy of the information provided and does not warrant, either explicitly or implicitly, the accuracy of the information provided. The architect is not responsible for the accuracy of the information provided and does not warrant, either explicitly or implicitly, the accuracy of the information provided. The architect is not responsible for the accuracy of the information provided and does not warrant, either explicitly or implicitly, the accuracy of the information provided.