



morton.

Wentworth Point 144/7 Baywater Drive

 1  1  1

The Waterfront is located moments to Sydney Olympic Park main venues, train station, Bicentennial Park and Millennium Parklands. Located in Palermo, this is your opportunity to move into this loft style one bedroom apartment, only a short stroll from The Promenade and The Piazza.

- Located on level one
- Combined living and dining room
- Reverse cycle air conditioning in lounge and each room
- Full size kitchen with stainless steel appliances
- Gas cooking and lots of cupboard space
- Great size bedrooms with huge built-in wardrobes
- Laundry room with clothes dryer
- Secure undercover one car space and storage cage
- NBN and Foxtel outlets ready for account connection
- On-site building manager.
- Palermo building includes exclusive pool and gym

Pulse Club membership is also available, giving you access to the local gym, in-door lap pool, outdoor lagoon pool, steam room and two tennis courts. Close to restaurants, local shops,

morton.com.au

View

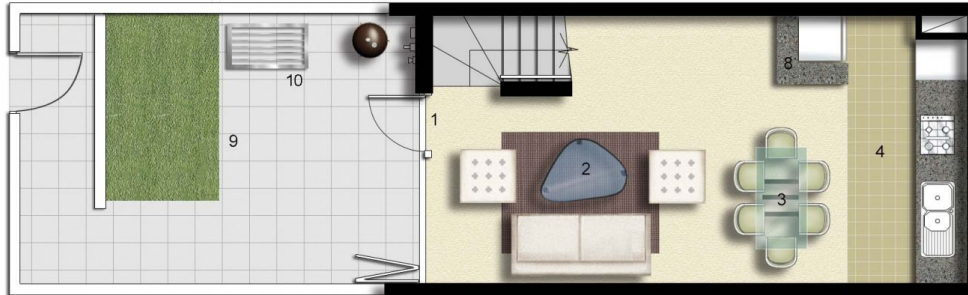
As advertised or by appointment

Agent

Nevena Petrovic

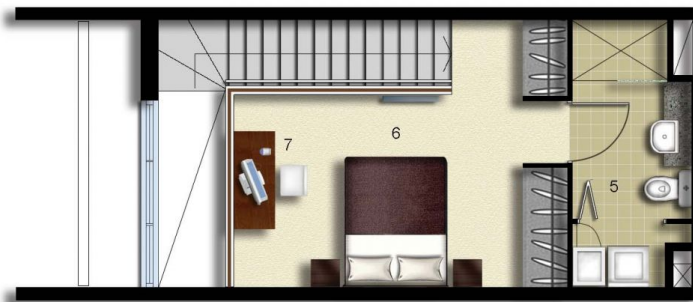
 0428 835 910

 nevena@morton.com.au

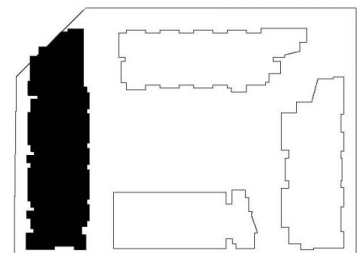


- ENTRY 1
- LIVING 2
- DINING 3
- KITCHEN 4
- ENSUITE/LAUNDRY 5
- BEDROOM 6
- STUDY 7
- STORAGE 8
- TERRACE 9
- CLOTHES DRYING 10

LEVEL 01



LEVEL 02



PALERMO

UNIT: **144**

TYPE: **1 Bedroom**

UNIT AREA: **60.0 sqm**

OUTDOOR AREA: **24.0 sqm**



Disclaimer: All layouts are indicative only, and subject to change.



0 2.5 5M