



morton.

Wentworth Point 735/25 Bennelong Parkway

 3  2  2

The Waterfront is located moments to Sydney Olympic Park main venues, train station, Bicentennial Park and Millennium Parklands. Located in Positano, this is your opportunity to move into this three bedroom apartment with gorgeous water views, only a short stroll from The Promenade and The Piazza.

Huge three bedroom apartment within the Waterfront complex features irreplaceable water views and panoramic district outlook to Sydney Olympic Park. Very well presented, split level apartment provides separate living and bedroom areas and open plan living flowing onto a spacious covered alfresco balcony with NE aspect and 180 degree permanent uninterrupted water views over Rhodes.

- Modern contemporary feel
- Stone benchtops, stainless steel appliances and gas cooking
- Balcony with gorgeous water views
- Second balcony from the second bedroom which enjoys views towards Sydney Olympic Park

morton.com.au

View

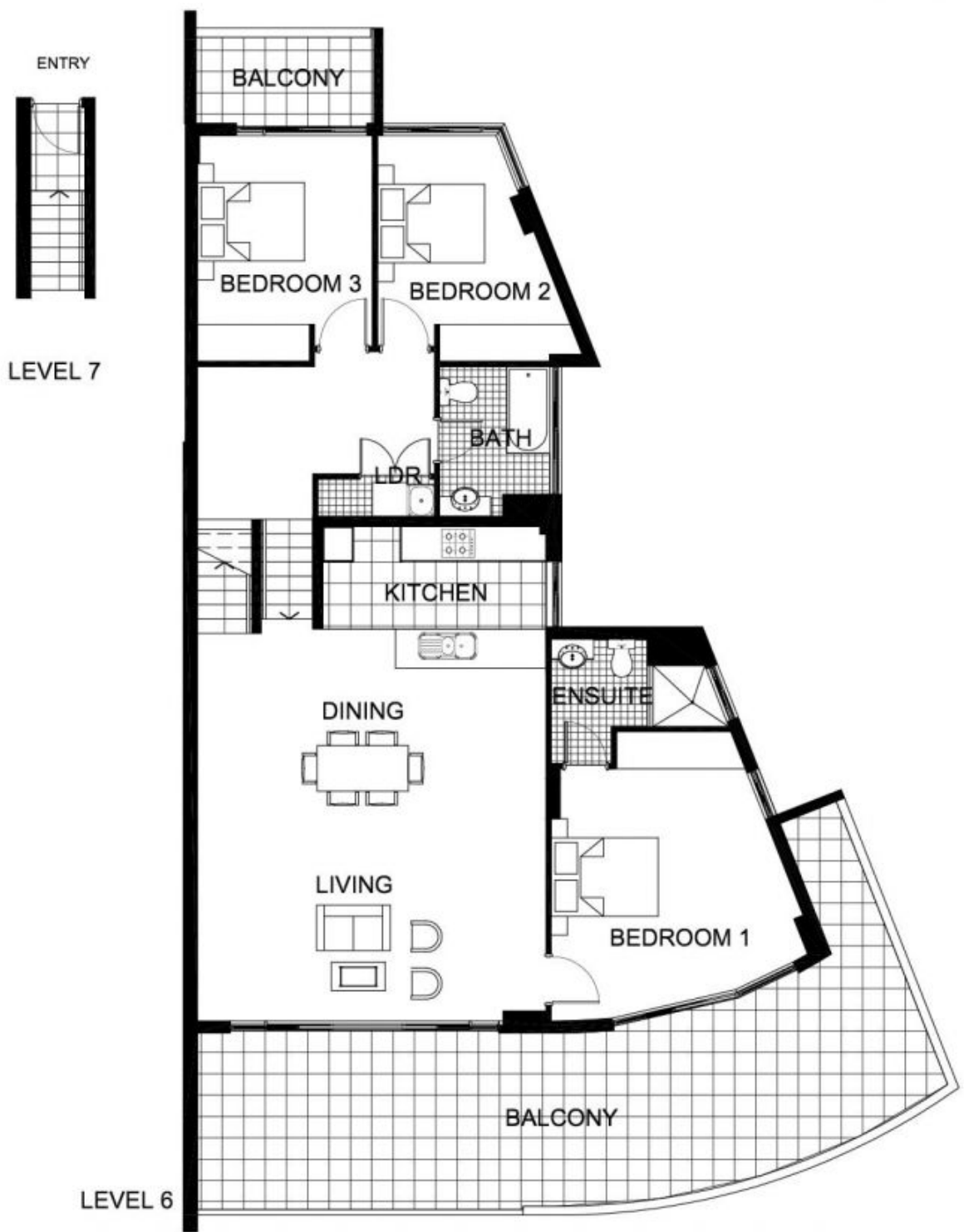
As advertised or by appointment

Agent

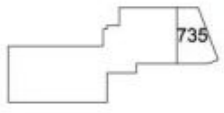
Morton RE



 rentals@morton.com.au



"The information contained herein is intended as an introduction to the general content of the project and is subject to variation. Interested parties should rely on their own enquiries and the contract for sale. The developer reserves the right to vary from these descriptions as it deems necessary or as any relevant authority may require."



THE WATERFRONT
AT HOMEBUSH BAY

3 BEDROOM

APARTMENT 735(Exist No.609)

INTERNAL AREA 121sqm

OUTDOOR AREA 46sqm

TOTAL AREA 167sqm



LEVEL 6

POSITANO