



morton.

Wentworth Point 302/4 Stromboli Strait

 2  2  2

The Waterfront is located moments to Sydney Olympic Park main venues, train station, Bicentennial Park and Millennium Parklands. Located in Torino, this is your opportunity to move into this split level two bedroom apartment only a short stroll from The Promenade and The Piazza.

- Luxury waterfront apartment located on level two
- Combined living and dining rooms
- Open kitchen with designer modern stainless steel appliances
- Gas cooking and quality finishes throughout
- Generous size separate living areas
- Good size bedrooms with built-in wardrobes
- Laundry room and clothes dryer
- Double car space

View

As advertised or by appointment

Agent

Morton RE



 rentals@morton.com.au

morton.com.au

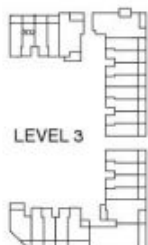


LEVEL 3

LEVEL 4



"The information contained herein is intended as an introduction to the general content of the project and is subject to variation. Interested parties should rely on their own enquiries and the contract for sale. The developer reserves the right to vary from these descriptions as it deems necessary or as any relevant authority may require."



2 BEDROOM

UNIT 302

TYPE L

INTERNAL AREA 92 sqm

OUTDOOR AREA 19 sqm

TOTAL AREA 111 sqm

TORINO