



morton.

Wentworth Point 326/45 Amalfi Drive

 1  1  1

The Waterfront is located moments to Sydney Olympic Park main venues, train station, Bicentennial Park and Millennium Parklands. Located in Corsica, this is your opportunity to move into this one bedroom apartment only a short stroll from The Promenade and The Piazza.

- Located on level three
- Combined living and dining room
- Full size kitchen with stainless steel appliances
- Gas cooking and lots of cupboard space
- Great size bedroom with huge built-in wardrobe
- Laundry room with clothes dryer
- Secure undercover car space and storage cage

Pulse Club membership is also available, giving you access to the local gym, in-door lap pool, outdoor lagoon pool, steam room and two tennis courts. Close to restaurants, local shops, public transport and ferry service to Parramatta and CBD.

View

As advertised or by appointment

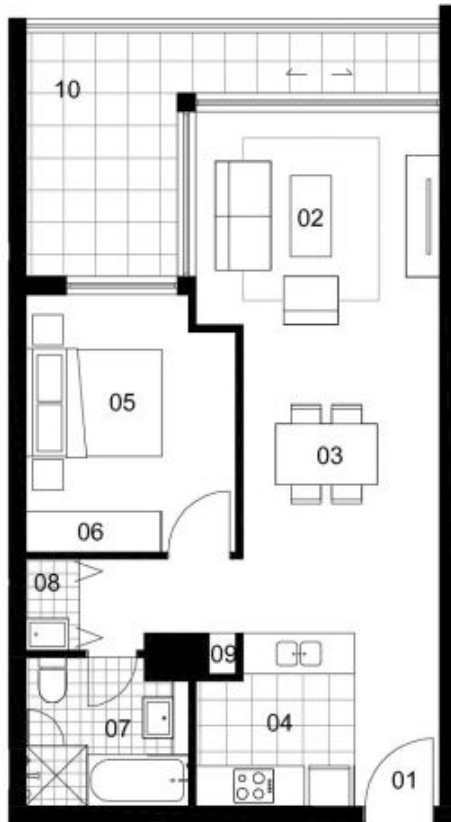
Agent

Sarah Fowell

 0437 492 129

 rentals@morton.com.au

morton.com.au



LOCATION PLAN

UNIT 326
 1 BEDROOM

INTERNAL AREA	56 sqm
TERRACE AREA	12 sqm
TOTAL AREA	68 sqm

ENTRY	01
LIVING	02
DINING	03
KITCHEN	04
BEDROOM	05
WARDROBE	06
BATHROOM	07
LAUNDRY	08
STORE	09
BALCONY/COURTYARD	10

CORSICA

Disclaimer: The particulars are set out as a general outline for the guidance of intending purchasers and do not constitute an offer or contract. All descriptions, dimensions, references to conditions and necessary permissions for use and other details are given in good faith and are believed to be correct, but any intending purchasers should not rely on them as statements or representations of fact, but must satisfy themselves by inspection or otherwise to the correctness of each item, and where necessary seek independent advice. No third party supplier or their agents has any authority to make or give any representations or warranty in relation to this property. * External areas may be larger for courtyard apartments. Refer to the detailed area schedule.