



morton.

Wentworth Point 205/31 The Promenade

 2  2  2

Located in St Tropez, this is your opportunity to move into this two bedroom apartment only a short stroll from The Promenade and The Piazza.

- Located on level two
- L shape living and dining room
- Reverse cycle air conditioning
- Full size kitchen with stainless steel appliances
- Gas cooking and lots of cupboard space
- Good size bedrooms with built-in wardrobes
- Water views from each bedroom and lounge
- Laundry room and clothes dryer
- Secure undercover double car space and storage cage
- Resort style in-ground pool in the building complex

View

As advertised or by appointment

Agent

Morton RE



 rentals@morton.com.au

morton.com.au

ST TROPEZ THE WATERFRONT

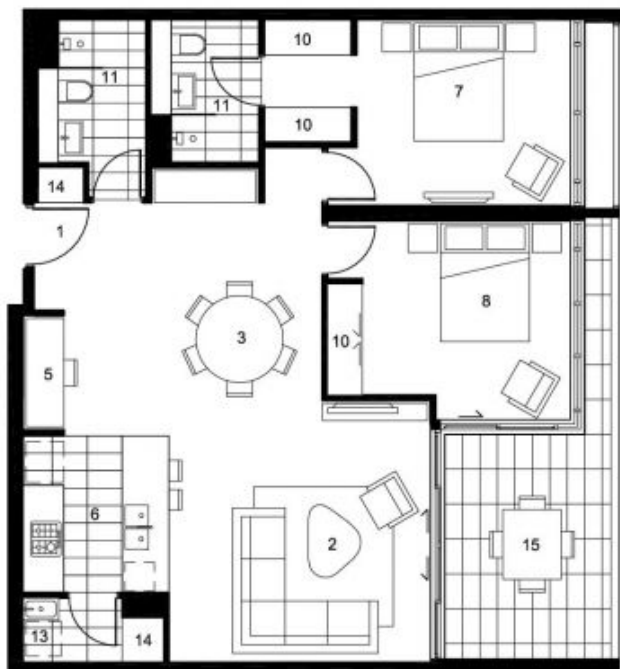
APARTMENT 3205 LEVEL 2 2 BED / 2 BATH

Internal Area 102 sqm
External Area 13 sqm
Total Area 115 sqm



KEY

- 01 Entry
- 02 Living
- 03 Dining
- 04 Study
- 05 Kitchen
- 06 Bedroom 1
- 07 Bedroom 2
- 08 Bedroom 3
- 09 Wardrobe
- 10 Bathroom
- 11 Powder Room
- 12 Laundry
- 13 Store
- 14 Balcony / Courtyard



Disclaimer: The particulars are set out as a general outline for the guidance of intending purchasers and do not constitute an offer or contract. All descriptions, dimensions, references to conditions and restrictive covenants are given in good faith and are believed to be correct, but any intending purchasers should not rely on them as statements or representations of fact, but must verify, themselves by inspection or otherwise to the satisfaction of their solicitor, and obtain necessary legal advice. The third party supplier or their agents has no authority to make or give any representation or warranty in relation to this property. *Attention please to the large balcony/courtyard area. Refer to the detailed floor plan.

