



morton.

Wentworth Point 307/1 Stromboli Street

 2  2  1

The Waterfront is located moments to Sydney Olympic Park main venues, train station, Bicentennial Park and Millennium Parklands. Located in Paros, this is your opportunity to move into this two bedroom apartment only a short stroll from The Promenade and The Piazza.

- Corner apartment located on level three
- Combined living and dining rooms
- Air conditioning
- Full size open kitchen
- Gas cooking and quality finishes throughout
- Generous size separate living areas
- Good size bedrooms with built-in wardrobes
- Laundry room and clothes dryer
- Single car space and storage cage.

View

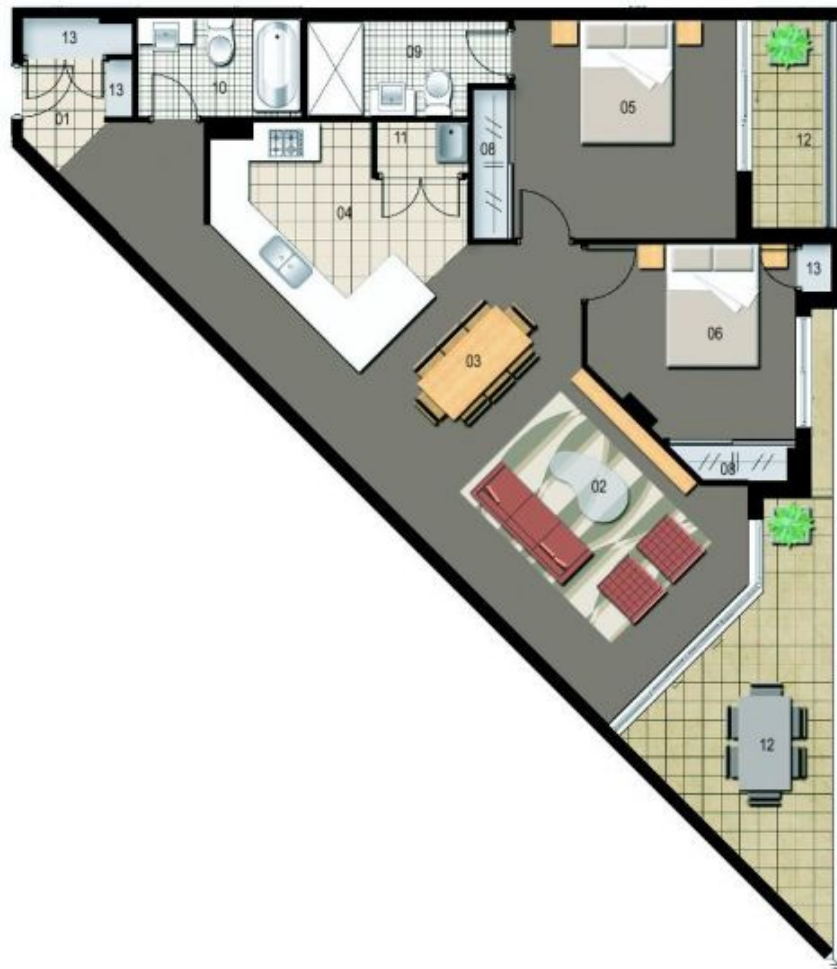
As advertised or by appointment

Agent

Morton RE

 [rentals@morton.com.au](tel:)

morton.com.au



0 1 2 3 4 5

ENTRY	01	WARDROBE	08
LIVING	02	ENSUITE	09
DINING	03	BATHROOM	10
KITCHEN	04	LAUNDRY	11
BEDROOM 1	05	BALCONY	12
BEDROOM 2	06	STORAGE	13
BEDROOM 3	07		



Unit 307

Lot Number	17
Type	2 Bedroom
Unit Area	90 sqm
Balcony	18 sqm
Total	108 sqm