



# morton.

**Wentworth Point** 430/25 Bennelong Parkway

 1  1  1

The Waterfront is located moments to Sydney Olympic Park main venues, train station, Bicentennial Park and Millennium Parklands. Located in Positano, this is your opportunity to move into this one bedroom apartment only a short stroll from The Promenade and The Piazza.

- Located on level four
- Combined living and dining room
- Reverse cycle air conditioning
- Open kitchen with stainless steel appliances
- Gas cooking and lots of cupboard space
- Great size bedroom with huge built-in wardrobes
- Laundry room and clothes dryer and washing machine
- Secure undercover car space
- Positano building includes exclusive pool

Pulse Club membership is also available, giving you access to the local gym, in-door lap pool, outdoor lagoon pool, steam room and two tennis courts. Close to restaurants, local shops, public transport and ferry service to Parramatta and CBD.

### View

As advertised or by appointment

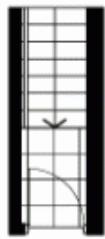
### Agent

**Morton RE**



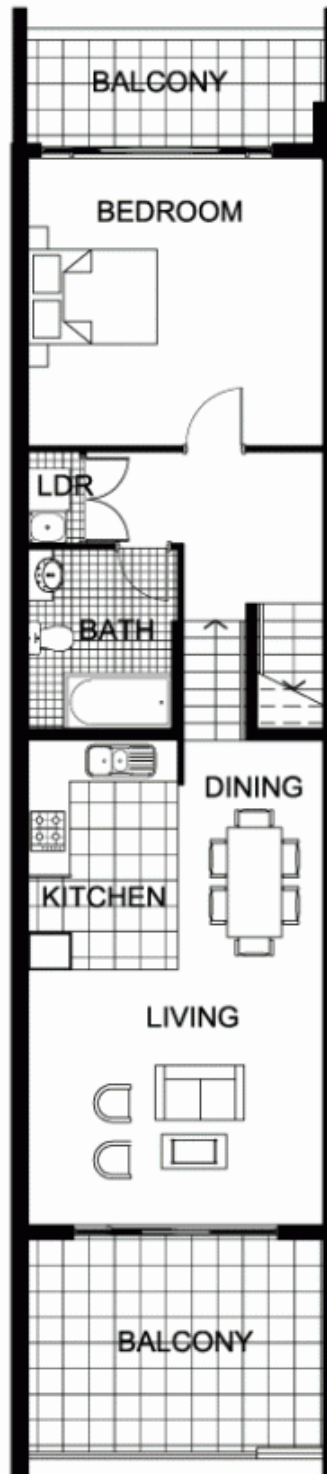
 [rentals@morton.com.au](mailto:rentals@morton.com.au)

[morton.com.au](http://morton.com.au)



ENTRY

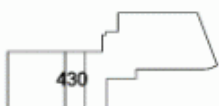
LEVEL 4.5



LEVEL 4



"The information contained herein is intended as an introduction to the general content of the project and is subject to variation. Interested parties should rely on their own enquiries and the contract for sale. The developer reserves the right to vary from these descriptions as it deems necessary or as any relevant authority may require."



**THE WATERFRONT**  
AT HOMEBUSH BAY

**1 BEDROOM**

**APARTMENT 430(Exist No.404)**

INTERNAL AREA 71 sqm

OUTDOOR AREA 20 sqm

TOTAL AREA 91 sqm



LEVEL 4

**POSITANO**