



morton.

WENTWORTH POINT 814/22 Baywater Drive

 1  1  1

Courtesy of the Federal Governments National Rental Affordability Scheme (NRAS) we have this near new one bedroom apartment.

To qualify, your annual gross income should not exceed \$45,956 for single occupant or \$63,579 dual occupants.

ONLY ONE AVAILABLE, located in Catania at The Waterfront. Features include top floor, latest state of the art designer kitchen with Caesar stone bench tops, Omega stainless steel appliances, reverse cycle air conditioning, internal laundry plus dryer, built-in robe, single secure undercover parking plus storage cage.

The documents required- 3 payslips, past 12 months bank statement, last years tax returns statement, rental ledger and the application (you can apply through <https://t-app.com.au/app/page-1/>) filled out by all the applicants over 18.

View

As advertised or by appointment

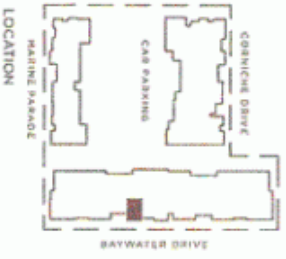
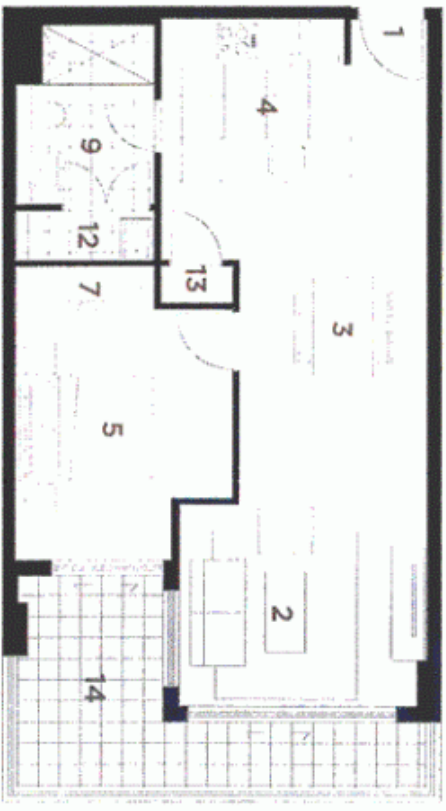
Agent

Morton RE



 rentals@morton.com.au

morton.com.au



UNIT 814
1 BEDROOM
 INTERNAL 57 sqm
 BALCONY 11 sqm
 TOTAL AREA 68 sqm

- KEY:**
- 1 Entry
 - 2 Living
 - 3 Dining
 - 4 Kitchen
 - 5 Bedroom 1
 - 6 Bedroom 2
 - 7 Wardrobe
 - 8 Study
 - 9 Bathroom
 - 10 Ensuite
 - 11 WC
 - 12 Laundry
 - 13 Store
 - 14 Balcony/Courtyard



REV. A



CATANIA
 THE WATERFRONT

Project: The architect and/or its representative for the purpose of obtaining opinions and do not conclude in effect or content. All fees, costs, charges, expenses, attorney's conduct, independent practitioners, penalties, fines and other items are paid to and by the architect and/or its representative. All fees, costs, charges, expenses, attorney's conduct, independent practitioners, penalties, fines and other items are paid to and by the architect and/or its representative. All fees, costs, charges, expenses, attorney's conduct, independent practitioners, penalties, fines and other items are paid to and by the architect and/or its representative. All fees, costs, charges, expenses, attorney's conduct, independent practitioners, penalties, fines and other items are paid to and by the architect and/or its representative.



THE WATERFRONT
 WENTWORTH POINT