



morton.

WENTWORTH POINT 711/27 Hill Road

 2  1  1

Located in Corsica at The Waterfront, here is your opportunity to move into this two bedroom apartment. A short stroll to The Piazza, local restaurants, convenience store, pharmacy, public transport off Hill Road and ferry service to Parramatta and City CBD. The Waterfront is located moments to Sydney Olympic Park main venues and train station, Bicentennial Park and Millennium Parklands.

This apartment is located on level 7, features split system air conditioning, designer kitchen with modern stainless steel appliances and gas cooking. Generous size combined living areas, good size bedrooms with built-in wardrobes, walk-in wardrobe, corner North facing apartment with good size apartment & very large undercover balcony great for entertaining, laundry room, clothes dryer and shelving, security undercover single car space and a storage cage.

Residents at The Waterfront have the opportunity to become a member of the Pulse Club giving you access to the local gym, in-door lap pool, outdoor Oasis pool, steam room and two

View

As advertised or by appointment

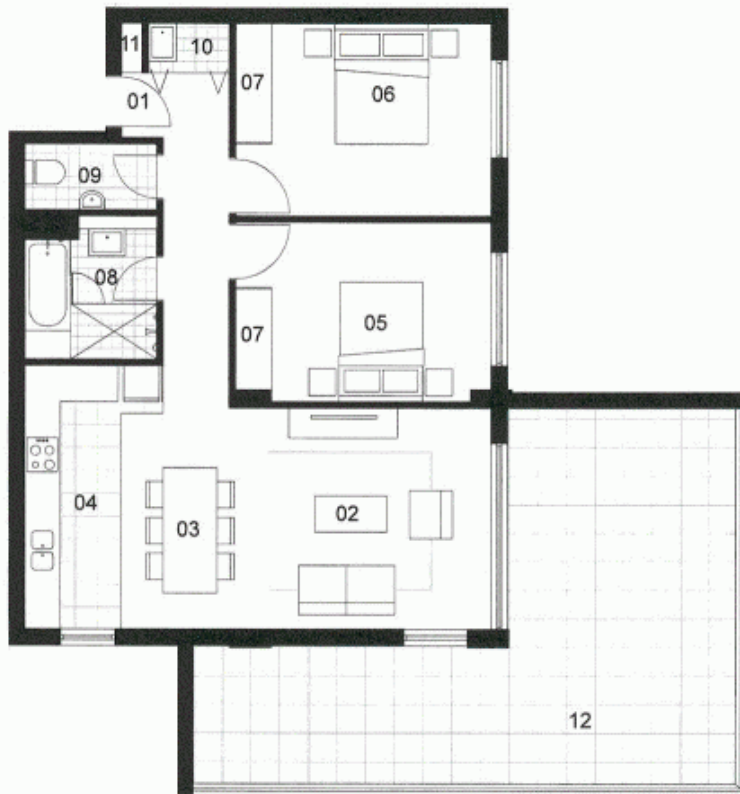
Agent

Morton RE



 rentals@morton.com.au

morton.com.au



LOCATION PLAN

UNIT 711

2 BEDROOM

INTERNAL AREA 75 sqm

TERRACE AREA 36 sqm

TOTAL AREA 111 sqm

ENTRY	01
LIVING	02
DINING	03
KITCHEN	04
BEDROOM1	05
BEDROOM2	06
WARDROBE	07
BATHROOM	08
WC	09
LAUNDRY	10
STORE	11
BALCONY/COURTYARD	12

Disclaimer: The particulars are set out as a general outline for the guidance of intending purchasers and do not constitute an offer or contract. All descriptions, dimensions, references to conditions and necessary permissions for use and other details are given in good faith and are believed to be correct, but any intending purchaser should not rely on them as statements or representations of fact, but must satisfy themselves by inspection or otherwise to the correctness of each item, and where necessary seek independent advice. No third party supplier or their agents has any authority to make or give any representations or warranty in relation to this property. * External areas may be larger for overyielded apartments. Refer to the detailed area schedule.

CORSICA