



# morton.

**WENTWORTH POINT** 426/25 Bennelong Road

 2  2  2

## SPLIT LEVEL / TWO BALCONIES

- Two bedrooms
- Dining and lounge
- Ensuite
- Pool access
- Two balconies
- Split system air conditioning
- Internal laundry with dryer
- Stainless steel appliances
- Single car space

Leasing at The Waterfront provides you with the opportunity to become a member of the Pulse Club: gym, in-door lap pool, outdoor Oasis pool, steam room and two tennis courts. All apartments at the Waterfront are Foxtel-ready and Homelinx-enabled for all internet and telecommunication services.

## View

As advertised or by appointment

## Agent

**Morton RE**



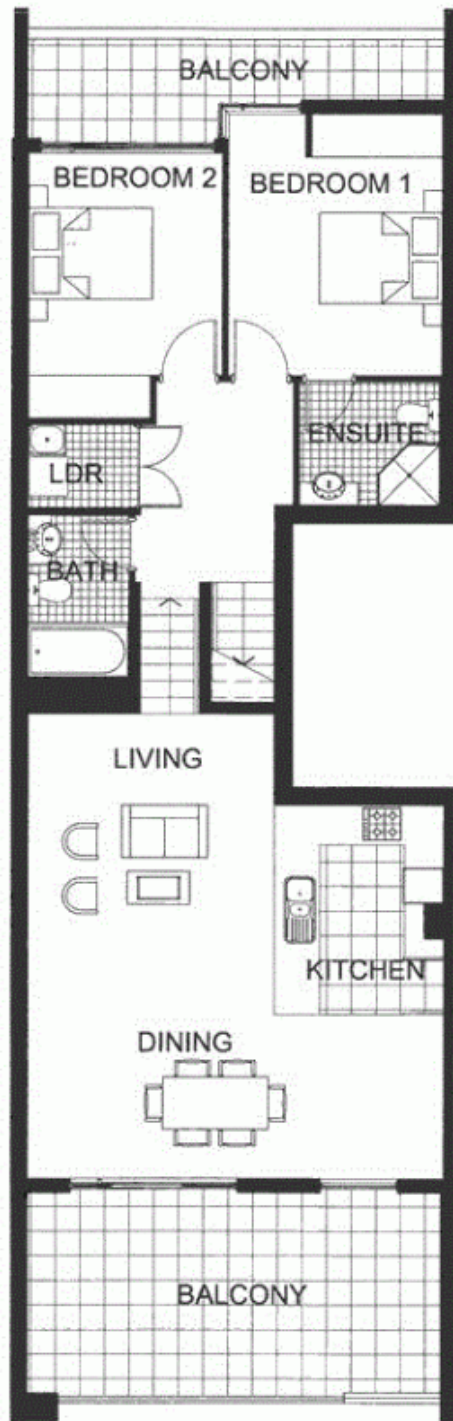
 rentals@morton.com.au

[morton.com.au](http://morton.com.au)



ENTRY

LEVEL 4.5



LEVEL 4



"The information contained herein is intended as an introduction to the general content of the project and is subject to variation. Interested parties should rely on their own enquiries and the contract for sale. The developer reserves the right to vary from these descriptions as it deems necessary or as any relevant authority may require."



426

2 BEDROOM

APARTMENT 426(Exist No.402)

INTERNAL AREA 92 sqm

OUTDOOR AREA 26 sqm

TOTAL AREA 118 sqm



LEVEL 4

**THE WATERFRONT**  
AT HOMEBUSH BAY

**POSITANO**