



# morton.

**WENTWORTH POINT** 715/37 Amalfi Drive

 2  2  1

This great two bedroom rental is perched on the seventh level of the Sorrento building at the Waterfront in Wentworth Point.

Features of the apartment include:

- Two bedrooms
- Two bathrooms
- Air conditioning
- Caesar stone kitchen
- Built in wardrobes
- Combined lounge and dining
- Large balcony
- Internal laundry with dryer
- Single secure car space plus a storage cage

Opportunity to join the Pulse Club as a member and access professional gym, heated in-door lap pool, steam room, tennis courts and other great outdoor activities. Cafes and Restaurants on site. The Estate is Homelinx enabled for internet and telecommunications.

[morton.com.au](http://morton.com.au)

### View

As advertised or by appointment

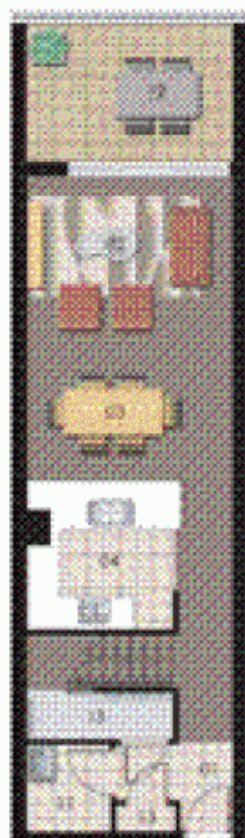
### Agent

**Morton RE**

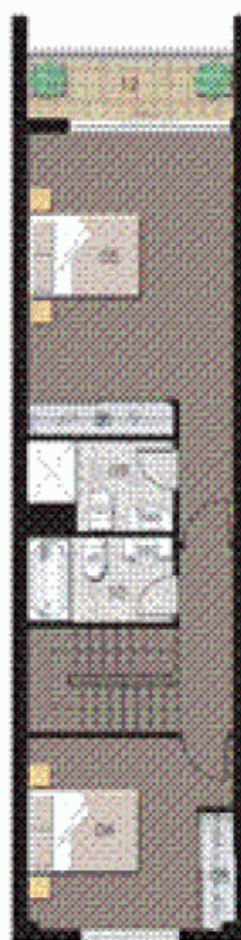
 [rentals@morton.com.au](tel:)

# SORRENTO

THE WATERFRONT  
AT ROXBURY BAY



LEVEL 7



LEVEL 8

2 1 0 2 4 2

ENTRY	05	WALKWAY	08
LIVING	10	DECK	05
DINING	10	BATHROOM	05
KITCHEN	04	LAUNDRY	07
BEDROOM 1	10	BALCONY	07
BEDROOM 2	10	STORAGE	05
BEDROOM 3	07		



## Unit 715

Unit Number	15
Type	2 Bedroom
Unit Area	95 sqm
Balance	14.4sqm
Total	109 sqm