



morton.

WENTWORTH POINT 664/3 Baywater Drive

 2  2  1

Located in Palermo at The Waterfront, here is your opportunity to move into this very neat two bedroom apartment. A short stroll to The Piazza, local restaurants, convenience store, pharmacy, public transport off Hill Road and ferry service to Parramatta and City CBD. The Waterfront is located moments to Sydney Olympic Park main venues and train station, Bicentennial Park and Millennium Parklands.

This apartment is located on level 6 with lovely views, features open plan living area plus split system air conditioning. Caesar stone kitchen with stainless steel appliances and gas cooking. Good sized balcony off the living area which overlooks the Palermo courtyard. Modern bathroom plus ensuite to main. Set in security building with lift access and single car space plus storage.

Residents at The Waterfront have the opportunity to become a member of the Pulse Club giving you access to the local gym, in-door lap pool, outdoor Oasis pool, steam room and two tennis courts. All apartments at the Waterfront are

morton.com.au

View

As advertised or by appointment

Agent

Morton RE

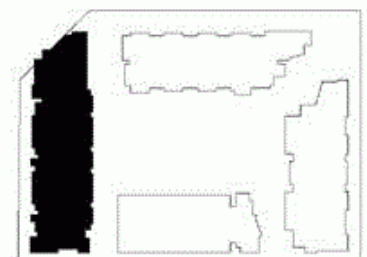


 rentals@morton.com.au



- ENTRY 1
- LIVING 2
- DINING 3
- KITCHEN 4
- MAIN BEDROOM 5
- BATHROOM 6
- BEDROOM 2 7
- ENSUITE 8
- LAUNDRY 9
- LINEN 10
- BALCONY 11
- CLOTHES DRYING 12

LEVEL 06



PALERMO

UNIT: **664**

TYPE: 2 Bedroom

UNIT AREA: 106.0 sqm

OUTDOOR AREA: 23.0 sqm



Disclaimer: All layouts are indicative only, and subject to change.



0 2.5 5M