



morton.

WENTWORTH POINT 13 Savona Drive



Located in Palermo at The Waterfront, here is your opportunity to move into loft style apartment. A short stroll to The Piazza, local restaurants, convenience store, pharmacy, public transport off Hill Road and ferry service to Parramatta and City CBD. The Waterfront is located moments to Sydney Olympic Park main venues and train station, Bicentennial Park and Millennium Parklands.

This apartment is located on the ground floor, features courtyard, combined living area, reverse cycle air conditioner, kitchen with stainless steel appliances including microwave, dishwasher and gas cooking in clean condition, bedroom with built-in, laundry room and clothes dryer, single security undercover car space.

Residents at The Waterfront have the opportunity to become a member of the Pulse Club giving you access to the local gym, in-door lap pool, outdoor Oasis pool, steam room and two tennis courts. All apartments at the Waterfront are Foxtel-ready and Homelinx-enabled for all internet and

View

As advertised or by appointment

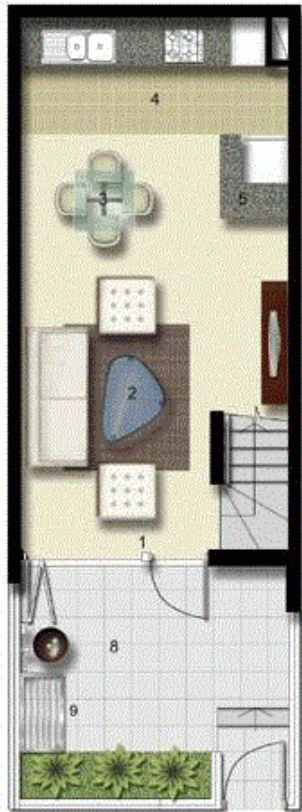
Agent

Sarah Fowell

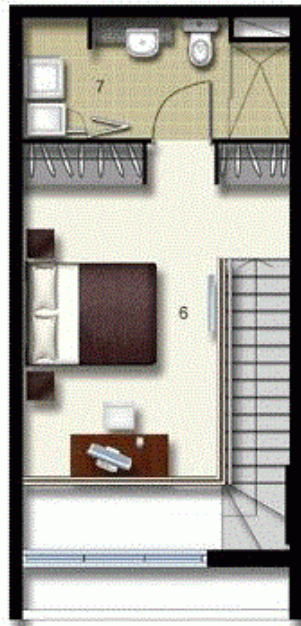
📞 0437 492 129

✉ rentals@morton.com.au

morton.com.au



LEVEL 01



LEVEL 02

- ENTRY 1
- LIVING 2
- DINING 3
- KITCHEN 4
- STORAGE 5
- MAIN BEDROOM 6
- ENSUITE LAUNDRY 7
- TERRACE 8
- CLOTHES DRYING 9



PALERMO

UNIT: **126**

TYPE: 1 Bedroom

UNIT AREA: 61.0 sqm

OUTDOOR AREA: 13.0 sqm



Disclaimer: All layouts are indicative only, and subject to change.

ALLEN JACK+COTTIER



0 2.5 5M