



morton.

Wentworth Point 203/3 The Piazza

🛏 2 🚿 2 🚗 1

The Waterfront is located moments to Sydney Olympic Park main venues, train station, Bicentennial Park and Millennium Parklands. Located in Portofino, this is your opportunity to move into this furnished two bedroom apartment only a short stroll from The Promenade and The Piazza.

- Apartment located on level two
- Combined living and dining rooms
- Air conditioning in bedrooms and lounge
- Full kitchen with utensils
- Gas cooking and quality finishes throughout
- Good size bedrooms with built-in wardrobes
- Laundry room and clothes dryer
- Single lock up garage

Pulse Club membership is also available, giving you access to the local gym, in-door lap pool, outdoor lagoon pool, steam room and two tennis courts. Close to restaurants, local shops, public transport and ferry service to Parramatta and CBD.

View

As advertised or by appointment

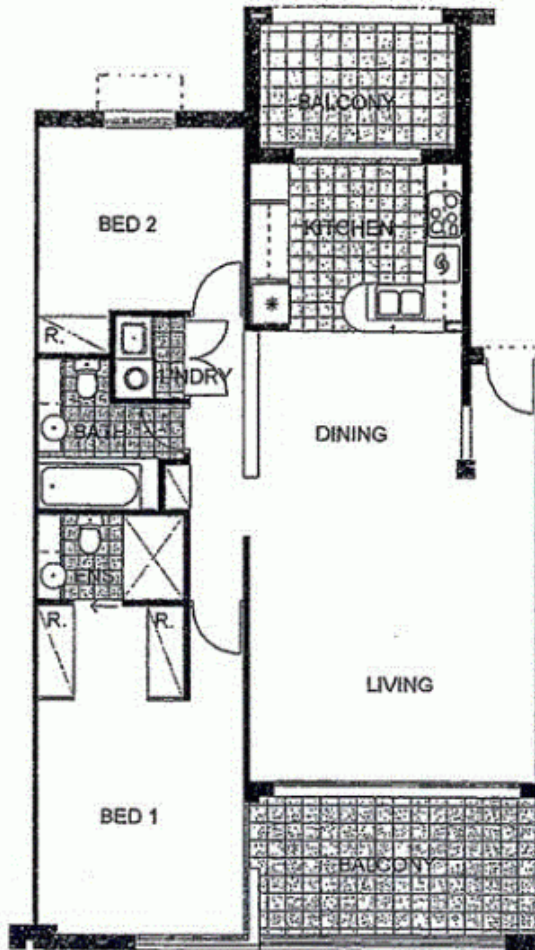
Agent

Morton RE

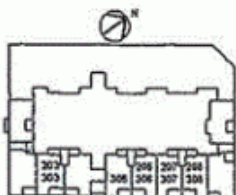


rentals@morton.com.au

morton.com.au



"The information contained herein is intended as an introduction to the general content of the project and is subject to variation. Interested parties should rely on their own enquiries and the contract for sale. The developer reserves the right to vary from these descriptions as it deems necessary or as any relevant authority may require."



2 BEDROOM APARTMENT 203,206,207,208, 303,305,306,307,308 TYPE-B

BUILDING AREA=101 m2 OUTDOOR AREA= 17 m2 TOTAL AREA= 118 m2

LOT 11

PORTOFINO