



**morton.**

**WENTWORTH POINT** 429/25 Bennelong Road

 1  1  1

Located in Positano at The Waterfront, here is your opportunity to move into this spacious split level one bedroom apartment. A short stroll to The Piazza, local restaurants, convenience store, pharmacy, public transport off Hill Road and ferry service to Parramatta and City CBD. The Waterfront is located moments to Sydney Olympic Park main venues and train station, Bicentennial Park and Millennium Parklands.

This apartment is located on level 4, features split system air conditioning, stainless steel appliances and gas cooking. Generous size combined living areas flowing onto undercover balcony overlooking the bay, king size bedroom with built-in wardrobes, internal laundry room and clothes dryer, security undercover car space.

Residents at The Waterfront have the opportunity to become a member of the Pulse Club giving you access to the local gym, in-door lap pool, outdoor Oasis pool, steam room and two tennis courts. All apartments at the Waterfront are Foxtel-ready and Homelinx-enabled for all internet and

**View**

As advertised or by appointment

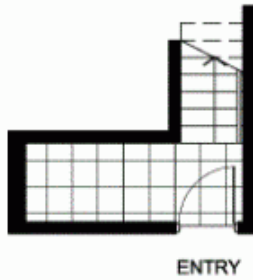
**Agent**

**Morton**

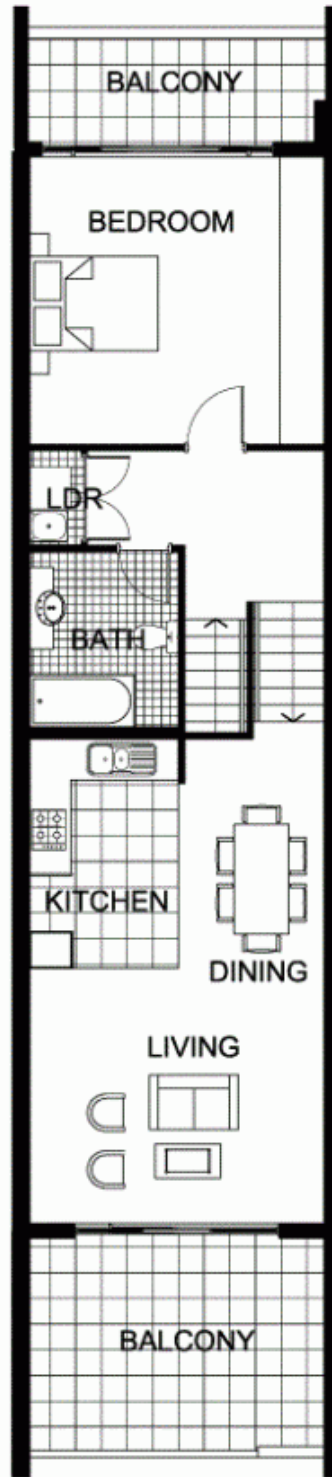


 info@morton.com.au

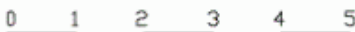
**morton.com.au**



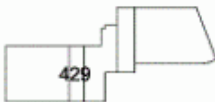
LEVEL 4.5



LEVEL 5



"The information contained herein is intended as an introduction to the general content of the project and is subject to variation. Interested parties should rely on their own enquiries and the contract for sale. The developer reserves the right to vary from these descriptions as it deems necessary or as any relevant authority may require."



1 BEDROOM

APARTMENT 429(Exist No.504)

INTERNAL AREA 73sqm

OUTDOOR AREA 19sqm

TOTAL AREA 92sqm



LEVEL 5

POSITANO

**THE WATERFRONT**  
AT HOMEBUSH BAY